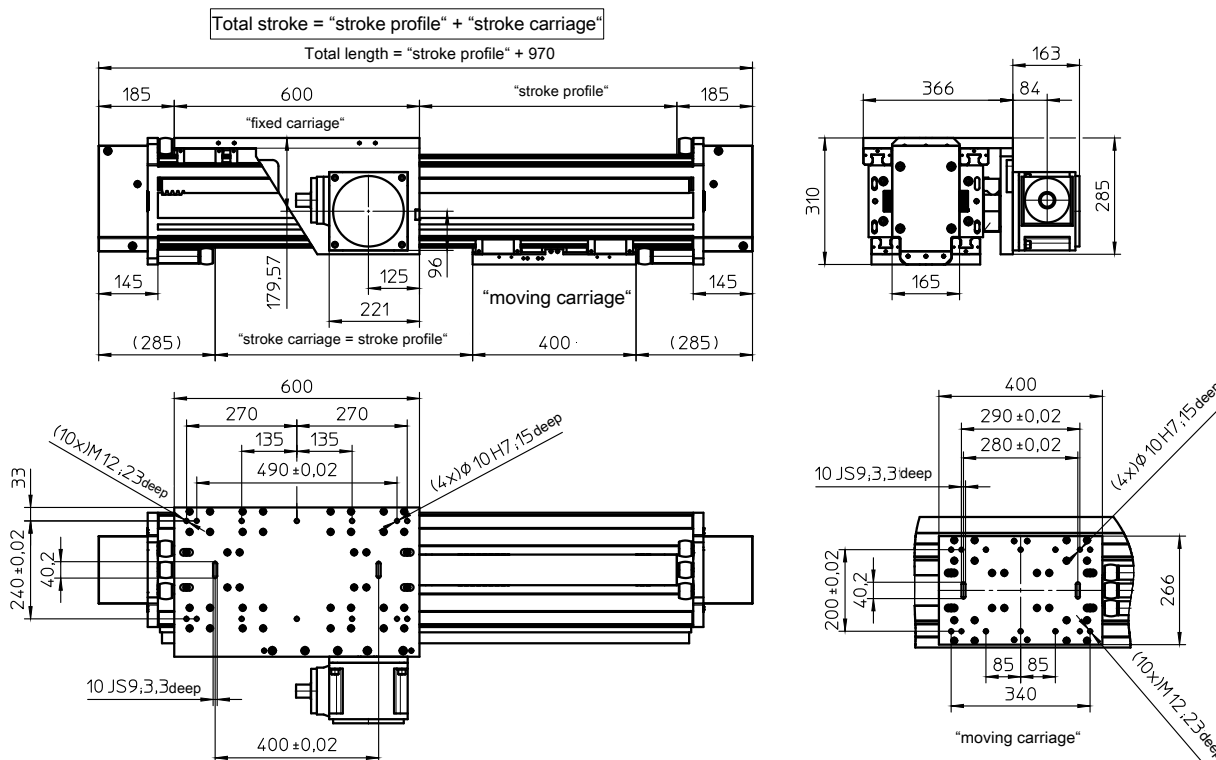


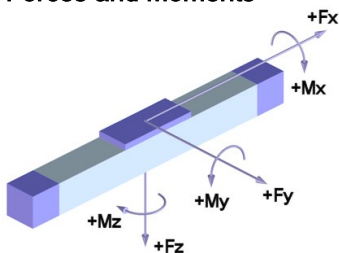
with rack-and-pinion drive module 4 (helical) and double linear guide (AZSS) and toothed belt drive of the moving carriage and double rail guide (ZSS)



## Weights

	GDHE
Basic length without stroke:	178.30 kg*
Weight per 100 mm profile: (± 2x100 mm stroke)	8.50 kg
Carriage 600 mm incl. gear:	63.50 kg
Carriage 400 mm:	18.00 kg
Gear D130:	28.30 kg
Max. total length: (longer on request)	2770 mm

## Forces and Moments



	GDHE-D130	
	Carriage with drive	Carriage without drive
<b>Forces</b>	Dynamic [N]	Dynamic [N]
<b>F<sub>x</sub></b>	6500-9500 **	
<b>F<sub>y</sub></b>	25000	20000
<b>F<sub>z</sub></b>	30000	30000
<b>Moments</b>	Dynamic [N]	Dynamic [N]
<b>M<sub>x</sub></b>	8000	4000
<b>M<sub>y</sub></b>	16000	15000
<b>M<sub>z</sub></b>	16000	12000

## Technical Data

	GDHE
Max. speed:	9.00 m/s
Max. acceleration:	20 m/s <sup>2</sup>
Repeat accuracy:	±0.10 mm
Idle torque at drive pinion:	11.0 Nm
Drive element:	Toothed belt <b>75 ATS15</b>
Rack and pinion:	Module 4 helical
Drive pinion:	Module 4, 21 teeth
Stroke per revolution:	2 x 280 mm
Servo-High-performance-gear:	DynaGear D130
Ratios:	5 / 10 / 15

Load F <sub>x</sub>	D130
	Dynamic [N]
i = 5:1	9500
i = 10:1	
i = 15:1	6500

Efficiency of gears: > 96 %

\* inclusive gear

\*\* depending on gear ratio (see table to right)