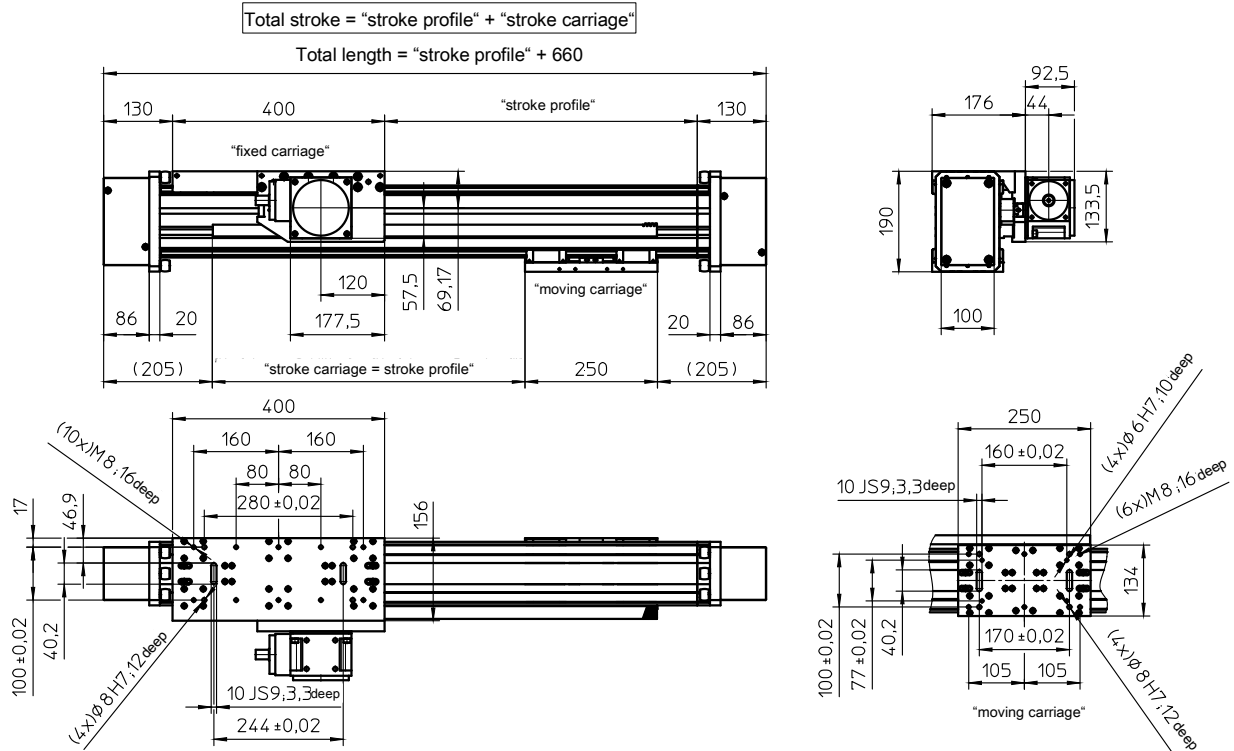


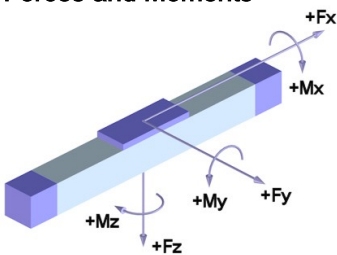
with rack-and-pinion drive module 2 (helical) and double linear guide (AZSS) and toothed belt drive of the moving carriage and double rail guide (ZSS)



### Weights

	GDHE
Basic length without stroke:	39.10 kg*
Weight per 100 mm profile: (± 2x100 mm stroke)	2.80 kg
Carriage 400 mm incl. gear:	14.30 kg
Carriage 250 mm:	3.70 kg
Gear D75:	6.30 kg
Max. total length: (longer on request)	1860 mm

### Forces and Moments



### Technical Data

	GDHE
Max. speed:	10.00 m/s
Max. acceleration:	20 m/s <sup>2</sup>
Repeat accuracy:	±0,10 mm
Idle torque at drive pinion:	6.5 Nm
Drive element:	Toothed belt <b>40 AT10-E</b>
Rack and pinion:	Module 2 helical
Drive pinion:	Module 2, 30 teeth
Stroke per revolution:	2 x 200 mm
Servo-High-performance-gear:	DynaGear D75
Ratios:	5 / 10 / 15

	GDHE-D75	
	Carriage with drive	Carriage without drive
<b>Forces</b>	Dynamic [N]	Dynamic [N]
<b>F<sub>x</sub></b>	1500-2200 **	
<b>F<sub>y</sub></b>	10000	6000
<b>F<sub>z</sub></b>	10000	8000
<b>Moments</b>	Dynamic [N]	Dynamic [N]
<b>M<sub>x</sub></b>	1500	1200
<b>M<sub>y</sub></b>	4000	3000
<b>M<sub>z</sub></b>	4000	2500

	D75
<b>Load F<sub>x</sub></b>	Dynamic [N]
<b>i = 5:1</b>	2200
<b>i = 10:1</b>	
<b>i = 15:1</b>	1500

Efficiency of gears: > 96 %

\* inclusive gear

\*\* depending on gear ratio (see table to right)