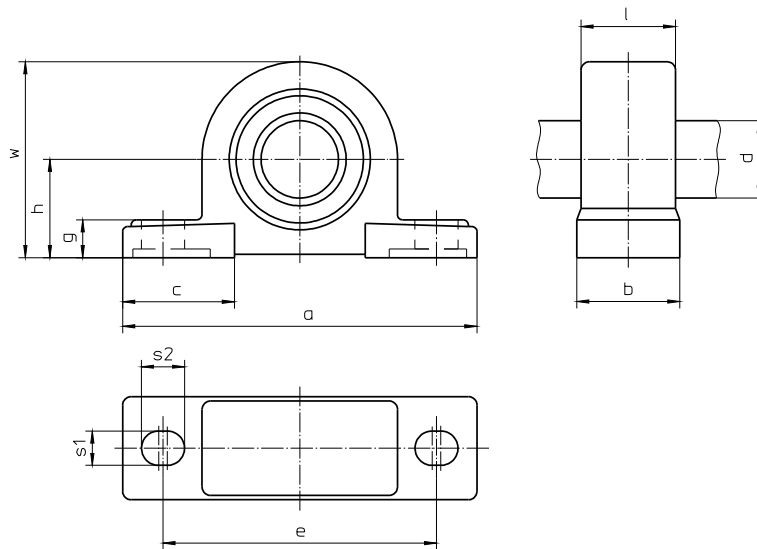


Pillow bearing drawing



For Joint shaft	a	b	c	d	e	g	h	l	s1	s2	w	Weight in kg			
												Length 500 mm complete		100 mm tube	
												St	VA	St	VA
GX1	167	48	54	30	127	19	47,6	43	17	21	92	1,20	1,21	0,14	0,14
GX2	190	54	60	40	146	20	54	50	17	22	106	2,37	2,42	0,23	0,23
GX4	206	60	65	45	159	22	57,2	55	20	25	114	3,56	3,11	0,26	0,16
GX8	265	70	77	60	203	27	76,2	65	25	29	150	6,08	5,55	0,35	0,23
GX16	292	78	85	70	232	30	88,9	64	25	31	175	11,03	11,37	0,26	0,34

Joint shaft diagram

Depends on length and revolution

