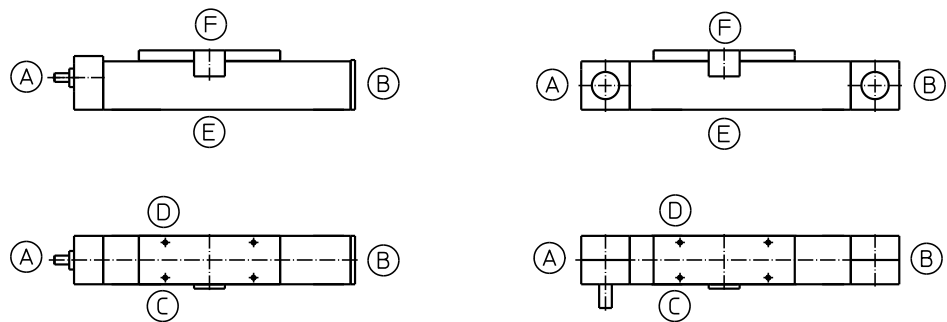


Ordering code for limit switch positions, limit switch type (EN),
lubrication ports and drive shafts (AZ) and wiper versions

Limit switch position



Limit switch types (EN)

EO2	= Inductive proximity switch "Normally Closed"	with 2 m cable (33003)
EO10	= Inductive proximity switch "Normally Closed"	with 10 m cable (10401)
ES2	= Inductive proximity switch "Normally Open"	with 10 m cable (10402)
ES10	= Inductive proximity switch "Normally Open"	with 2 m cable (10403)
EMS / EMB	= Mechanical limit switch "normally closed" (S = Siemens, B = Balluff; without cable)	

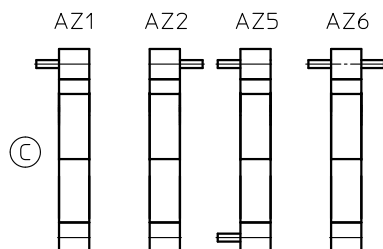
Insofar as there are no other specifications provided, the limit switches are fitted as follows (standard):

1. Switch: **EO2 NC** with 2 m cable on page C, pos. A, cable exit at A
Switching point = Mechanical end position
2. Switch: **EO2 NC** with 2 m cable on page C, pos. B, cable exit at B
Switching point = Mechanical end position
3. Switch: **ES2 NO** with 2 m cable on page C, pos. A, cable exit at A
Switching point = Directly beside first switch (as reference)

Lubrication ports

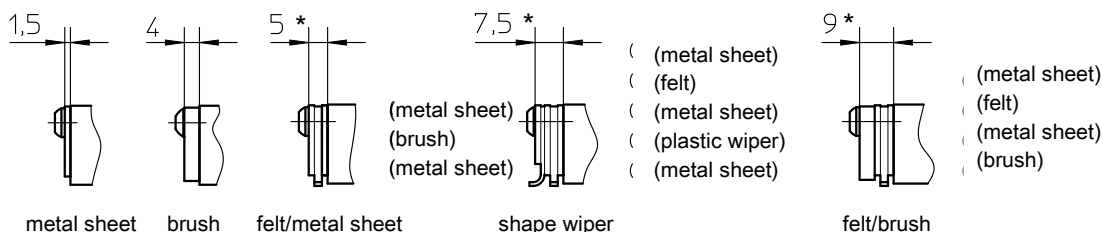
Standard Beta, Delta-C and Alpha: Lubricating nipple M8x1, page C + D
(exception: Delta = M6; Beta 40, Beta 70-C-ARS-ASS = drive in lubrication nipple)

Drive shafts (AZ)



Wiper versions

(Design is based on carriage plate)



* Bei Beta 165(-C)
und Beta 180(-C)
+ 2 mm