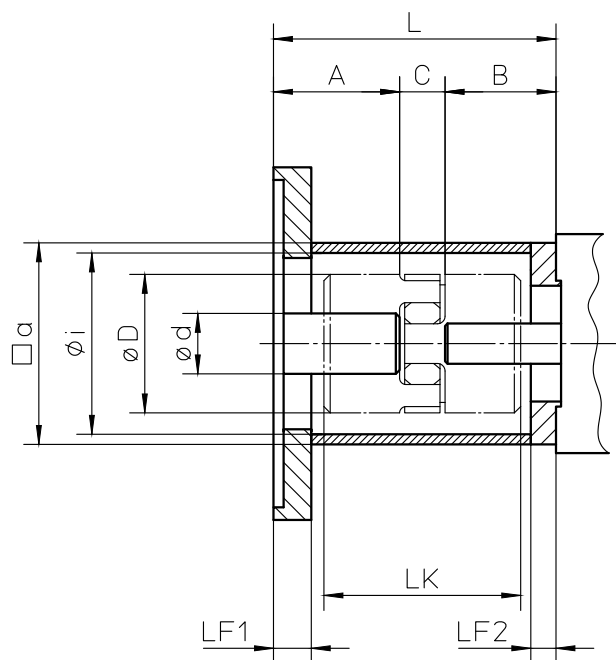


## Motor mounting, coupling (MGK)

### Standard motor mounting (3-part)



Gr.	□ α	φ i	LF1	LF2
55	55	46	15	8
80	80	69	15	10
110	110	88	20	15

$$L = A + B + C$$

A = Length of drive shaft  
of motor/gear

B = Length of drive journal  
of mechanical linear drive

C = See Table for Coupling Sizes

### Size of coupling

	9	12	14	19	24	28
C	10	12	13	16	18	20
∅ d <sub>max</sub>	11	12	16 (14)	20	28	38
∅ D	20	25	30	40	55	65
LK	30	34	35 (50)	66	78	90

Clamping hub and clamping ring (from size 14) possible.  
Dimensions in brackets apply for clamping ring.