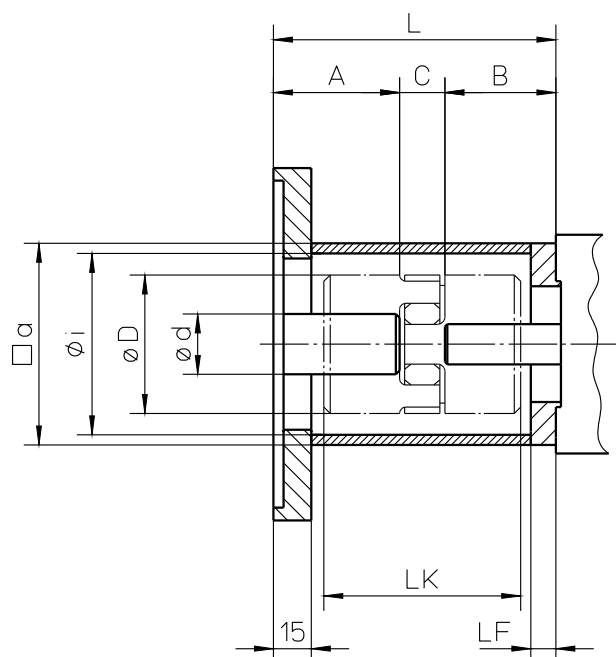


# Motor mounting, coupling (MGK)

## Standard motor mounting (3-part)



Gr.	a	φ <sub>i</sub>	LF
55	55	46	8
80	80	69	10

$$L = A + B + C$$

- A = Length of drive shaft of motor/gear
- B = Length of drive journal of mechanical linear drive
- C = See Table for Coupling Sizes

## Size of coupling

	9	12	14	19	24	28
C	10	12	13	16	18	20
φ d <sub>max</sub>	11	12	16 (14)	20	28	38
φ D	20	25	30	40	55	65
LK	30	34	35 (50)	66	78	90

Clamping hub and clamping ring (from size 14) possible.  
Dimensions in brackets apply for clamping ring.