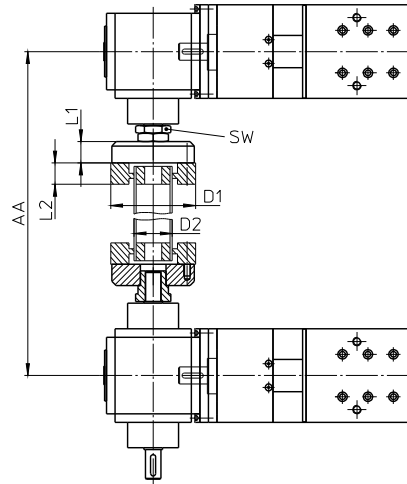
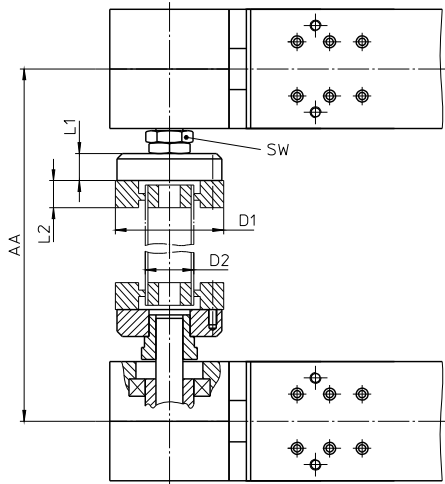


Joint shaft mounting (GX)

Toothed belt drive

Threaded spindle drive

Dimension AA = Centre distance between mechanical linear drives



Linear Drive	Size	max. Moment [Nm]	AA min.	SW
Beta 40-ZSS	GX1	8	170	22
Beta 50-C-ZRS	GX1	12	190	22
Beta 60-ZSS	GX2	22	205	27
Beta 60-SSS	GX2		320	22
Beta 60-SGV	GX2		320	22
Beta 70-C-ZRS-ZSS	GX2	31	215	27
Beta 70-C-SRS-SSS	GX2		330	27
Beta 80-ZRS-ZSS	GX2	47	225	27
Beta 80-SRS-SSS	GX2		330	27
Beta 80-C-ZRS-ZSS	GX4	74	270	36
Beta 100-ZRS-ZSS	GX4	89	270	36
Beta 100-D-ZSS	GX4	38	270	36
Beta 100-D-SSS	GX4		290	36
Beta 110-ZRS-ZSS	GX4 / GX8*	191	320	46
Beta 110-SRS-SSS	GX4		350	46
Beta 120-ZRS-ZSS	GX4 / GX8*	153	300	46
Beta 120-C-ZSS	GX4 / GX8*	229	300	46
Beta 120-C-SSS	GX4		350	46
Beta 140-ZRS-ZSS	GX4 / GX8*	140	310	46
Beta 140-SRS-SSS	GX4		350	36
Beta 140-C-ZSS	GX4 / GX8*	140	310	46
Beta 140-C-SSS	GX4		350	36
Beta 165-ZSS	GX16	700	350	55
Beta 165(-C)-SGV / -SSF	GX8		430	46
Beta 165-SSS	GX8		430	46
Beta 180-ZSS	GX8 / GX16*	306	370	55
Beta 180-SSS	GX8		430	46
Beta 180-C-ZSS	GX8 / GX16*	370	370	55
Beta 180-C-SSS	GX8		430	46

Linear Drive	Size	Moment max. [Nm]	AA min.	SW
--------------	------	------------------	---------	----

Gamma 90-ZSS	GX4	77	250	36
Gamma 90-ZSSD	GX2	37	240	36
Gamma 120-ZSS	GX4	90	280	36
Gamma 120-ZSSD	GX4	57	280	36
Gamma 160-ZSS	GX4 / GX8*	153	300	46
Gamma 160-ZSSD	GX4	74	300	46
Gamma 220-ZSS	GX8 / GX16*	306	370	55
Gamma 220-ZSSD	GX4 / GX8*	107	350	46

Sigma 70-ZRS	GX2	22	205	27
Sigma 90-ZRS	GX2	36	240	27
Sigma 90-ZRSD	GX2	18	240	27
Sigma 120-ZRS	GX4	89	280	36
Sigma 120-ZRSD	GX4	57	280	36
Sigma 160-ZRS	GX4 / GX8*	153	300	46
Sigma 160-ZRSD	GX4	77	300	46

Size	D1	D2		L1	L2
		St	VA		
GX1	57	30x2	30x2,0	20	24
GX2	88	40x2,5	40x2,5	20	24
GX4	100	45x2,5	44,5x1,5	25	28
GX8	125	60x2,5	60,3x1,6	30	32
GX16	155	70x1,5	70,0x2,0	50	35

* The larger version is to be selected where necessary.

This table is a selection. More sizes and combinations on request.