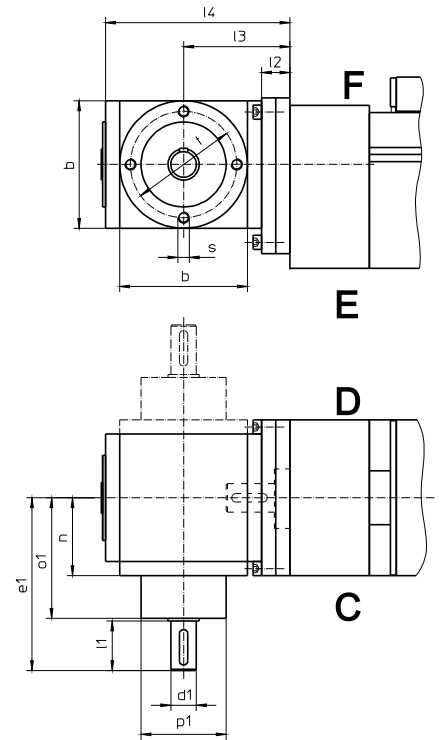


Bevel gear mounting (KRG)

Unit size	Gear types	Version	Ratio	b	l2	l3	l4	n	s	t
Beta 40	V065	E0, K0	1:1 ... 3:1	65	11	53	95	42	M6	54
Beta 50-C	V065	E0, K0	1:1 ... 3:1	65	11	53	95	42	M6	54
Beta 60	V065	E0, K0	1:1 ... 3:1	65	16	58	100	42	M6	54
Beta 60-SGV	V065	E0, K0	1:1 ... 3:1	65	16	58	100	42	M6	54
Beta 70-C	V065	E0, K0	1:1 ... 3:1	65	16	58	100	42	M6	54
Beta 80	V090	E0, K0	1:1 ... 6:1	90	20	75	130	55	M8	75
Beta 100-D	V090	E0, K0	1:1 ... 6:1	90	20	75	130	55	M8	75
Beta 110	V090	E0, K0	1:1 ... 6:1	90	20	75	130	55	M8	75
Beta 110-C-SGV	V120	E0, K0	1:1 ... 6:1	120	30	102	174	75	M10	100
Beta 120-C	V120	E0, K0	1:1 ... 6:1	120	30	102	174	75	M10	100
Beta 140(-C)	V090	E0, K0	1:1 ... 6:1	90	20	75	130	55	M8	75
Beta 165(-C)	V120	E0, K0	1:1 ... 6:1	120	30	102	174	75	M10	100
Beta 180(-C)	V120	E0, K0	1:1 ... 6:1	120	30	102	174	75	M10	100
Delta 90	V065	E0, K0	1:1 ... 3:1	65	16	58	100	42	M6	54
Delta 110	V065	E0, K0	1:1 ... 3:1	65	18	58	100	42	M6	54
Delta 145-C	V090	B0,C0,G0,H0	1:1 ... 6:1	90	94	149	204	55	M8	75
Delta 200	V120	B0,C0,G0,H0	1:1 ... 6:1	120	112	184	256	75	M10	100
Delta 240(-C)	V120	B0,C0,G0,H0	1:1 ... 6:1	120	112	184	256	75	M10	100
Alpha 15-B-155	V065	E0, K0	1:1 ... 3:1	65	16	58	100	42	M6	54
Alpha 20-B-225	V090	E0, K0	1:1 ... 6:1	90	20	75	130	55	M8	75
Alpha 30-B-325	V090	E0, K0	1:1 ... 6:1	90	20	75	130	55	M8	75
Alpha 35-B-455	V120	E0, K0	1:1 ... 6:1	120	30	102	174	75	M10	100

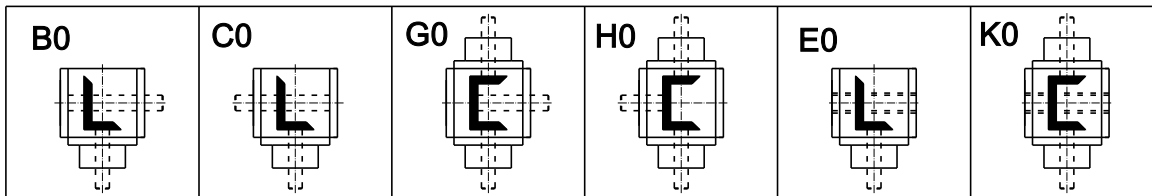


Motor mounting side "C", "D", "E" or "F" (see also page Z1)

Ratio	1:1 – 2:1					3:1					4:1					5:1 – 6:1					
	d1	l1	e1	o1	p1	d1	l1	e1	o1	p1	d1	l1	e1	o1	p1	d1	l1	e1	o1	p1	
Beta 40	12	26	100	72	44	12	26	100	72	44											
Beta 50-C	12	26	100	72	44	12	26	100	72	44											
Beta 60	12	26	100	72	44	12	26	100	72	44											
Beta 60-SGV	12	26	100	72	44	12	26	100	72	44											
Beta 70-C	12	26	100	72	44	12	26	100	72	44											
Beta 80	18	35	122	85	60	12	35	122	85	60	12	35	132	95	60	12	35	132	95	60	60
Beta 100-D	18	35	122	85	60	12	35	122	85	60	12	35	132	95	60	12	35	132	95	60	60
Beta 110	18	35	122	85	60	12	35	122	85	60	12	35	132	95	60	12	35	132	95	60	60
Beta 110-C-SGV	25	45	162	115	80	20	45	162	115	80	20	45	172	125	80	15	35	162	125	70	70
Beta 120-C	25	45	162	115	80	20	45	162	115	80	20	45	172	125	80	15	35	162	125	70	70
Beta 140(-C)	18	35	122	85	60	12	35	122	85	60	12	35	132	95	60	12	35	132	95	60	60
Beta 165(-C)	25	45	162	115	80	20	45	162	115	80	20	45	172	125	80	15	35	162	125	70	70
Beta 180(-C)	25	45	162	115	80	20	45	162	115	80	20	45	172	125	80	15	35	162	125	70	70
Delta 90	12	26	100	72	44	12	26	100	72	44											
Delta 110-C	12	26	100	72	44	12	26	100	72	44											
Delta 145-C	18	35	122	85	60	12	35	122	85	60	12	35	132	95	60	12	35	132	95	60	60
Delta 200	25	45	162	115	80	20	45	162	115	80	20	45	172	125	80	15	35	162	125	70	70
Delta 240(-C)	25	45	162	115	80	20	45	162	115	80	20	45	172	125	80	15	35	162	125	70	70
Alpha 15-B-155	12	26	100	72	44	12	26	100	72	44											
Alpha 20-B-225	18	35	122	85	60	12	35	122	85	60	12	35	132	95	60	12	35	132	95	60	60
Alpha 30-B-325	18	35	122	85	60	12	35	122	85	60	12	35	132	95	60	12	35	132	95	60	60
Alpha 35-B-455	25	45	162	115	80	20	45	162	115	80	20	45	172	125	80	15	35	162	125	70	70

All bevel gears are lubricated for life with synthetic oil (lubrication B0). Maximum duty cycle 40 %.
For a longer duty cycle, please order "lubrication B1" and specify mounting position. Angular play <20 minutes.

Versions:



(Pay attention to diameter of sleeve shaft of version E0/K0.)

Allowed output nominal torque (Nm) at input rotation speed 3000 min⁻¹

Atek-Gears

Gear	Ratio i							Ø Sleeve shafts of Version E0 / K0
	1:1	1,5:1	2:1	3:1	4:1	5:1	6:1	
065	10	10	10	10	-	-	-	12
090	27	25	23	23	23	23	23	18
120	66	61	56	58	60	60	54	25

MS-Graessner-Gears

Power Gear	Ratio i					
	1:1	1,5:1	2:1	3:1	4:1	5:1
P54	15	15	12	12	-	-
P75	45	45	42	33	28	25
P90	78	78	68	54	52	40
P110	150	150	150	120	100	85

At allowed values there are only limited** thermal limiting performances considered.
This applies to both producers.
Details see documentation of producers (Atek and MS-Graessner).

** switch-on time ED = 40 %, rotation speed 3000 U/min, ambient temperature 20 °C