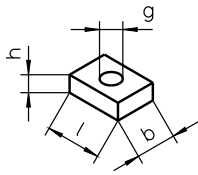
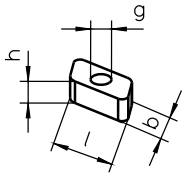
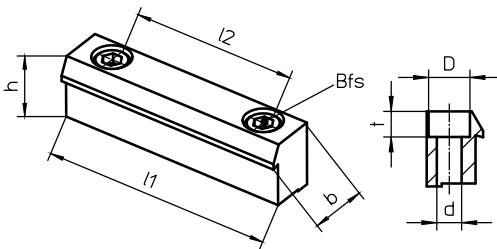


NS 2..21

RM 2 / 6


Lineareinheit	Seite *	NS	Ident.-Nr.	l [mm]	b [mm]	h [mm]	g
Sigma 70	E	2	10557	16	10	4	M5
		2	10557	16	10	4	M5
Sigma 90	E	21	22955	20	10	5	M6
		RM2	15370	10	6	4	M4
		19	23950	20	16	8	M6
Sigma 120	E	20	23949	20	16	8	M8
		10	16499	20	13	6	M6
		6	10561	25	18	8	M10
Sigma 160	E	RM6	15372	18	10	8	M6

BL 1 / 2


Lineareinheit	BL	Ident.-Nr.	l1 [mm]	l2 [mm]	b [mm]	h [mm]	Bfs	D [mm]	d [mm]	t [mm]
Sigma 70	11	25267	70	50	13	12	M6	11	6,6	6,8
Sigma 90	1	10552	70	50	15	17,5	M6	11	6,6	6,8
Sigma 120	2	10553	70	50	15	20	M6	11	6,6	6,8
Sigma 160	2	10553	70	50	15	20	M6	11	6,6	6,8

* Erläuterung der Seite C..E siehe Katalogseite Z1
Bfs = Befestigungsschraube DIN 912 / ISO 4762