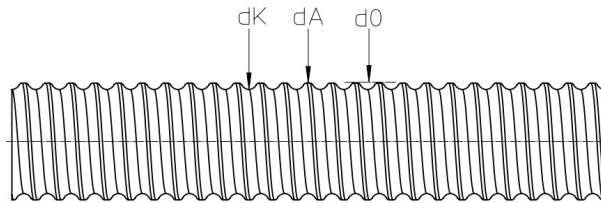


Rolled ball screw spindles

- Ball screw spindles from reputable manufacturers (some made specially for HSB)
- Small rotating parts ensure a high dynamic response and smooth running.
- Accuracy classes: Standard T7 (52 µm/300 mm), optionally T5 (23 µm/300 mm) (the most sizes)
- Standard length 5600 mm; jointed spindles for greater lengths available on request



Nominal \varnothing d_0 [mm]	Nominal pitch p [mm]	Outer \varnothing $[0/-0,2]$ d_A [mm]	Core \varnothing d_K [mm]	Number of starts	Ball \varnothing D_w [mm]	Max. length [mm]	Specific weight [kg/m]	Cross section area [mm ²]	Minimum axial area moment of inertia [mm ⁴]	Mass moment of inertia [kg m ²]
12 05		11.5	10.1	1	2.0	3000	0.76	96,4	689	101
12 10		11.5	10.1	2	2.0	3000	0.75	96,1	659	99
16 05		15.4	13.0	1	3.0	5600	1.25	161	2003	295
16 10		15.4	13.0	2	3.0	5600	1.29	160	1691	304
16 20		15.4	13.0	4	3.0	5600	1.24	159	2043	294
16 40		15.0	12.6	4	3.0	5600	1.23	159	2038	277
20 05		19.5	16.9	1	3.5	5600	2.05	261	5392	780
20 10		19.5	16.9	2	3.5	5600	2.00	260	4607	761
20 20		19.5	16.9	4	3.5	5600	2.16	259	5406	821
20 50		19.1	16.5	5	3.5	5600	2.19	262	5522	799
25 05		24.5	21.9	1	3.5	5600	3.81	425	14279	2287
25 10		24.5	22.0	2	3.5	5600	3.39	425	12665	2035
25 25		24.5	22.0	5	3.5	5600	3.44	423	14365	2065
25 50		24.1	21.5	5	3.5	5600	3.48	429	14765	2021
32 05		31.5	28.9	1	3.5	5600	5.73	717	40769	5686
32 10		31.5	29.0	2	3.5	5600	5.54	716	37052	5497
32 20		31.5	28.9	4	3.5	5600	5.81	716	40959	5776
32 40		30.9	28.3	4	3.5	5600	5.51	717	41035	5261
32 60		31.0	28.4	6	3.5	5600	5.66	721	41485	5439
40 10		38.0	33.8	1	6.0	7500	8.25	1036	83224	11913
40 20		38.0	33.8	2	6.0	7500	7.99	1035	75178	11538
40 40		38.0	33.8	4	6.0	7500	8.38	1031	85371	12101