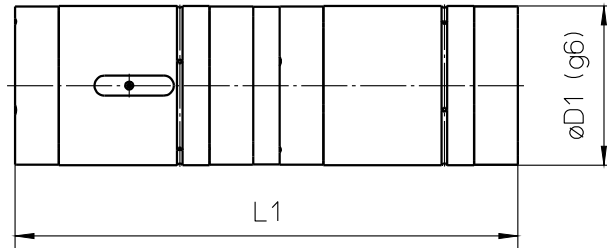


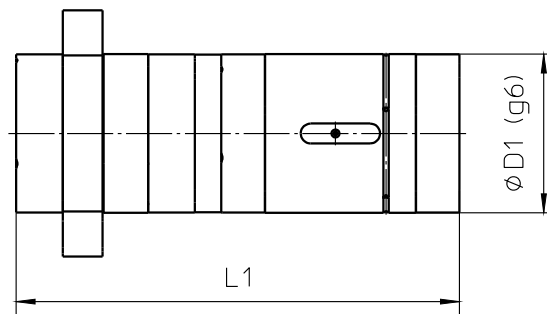
Double nuts HSB (KGM-MM and KGM-FM)

- Double nuts are made by a combination of 2 single nuts; either 2 cylindrical nuts (MM) or one flanged nut and one cylindrical nut (FM)
- The pre-load can be selected by the customer as 3 %, 5 % or 7 % of the dynamic load rating of the ball screw nut

• Cylindrical double nut KGM-MM



• Flanged double nut KGM-FM



Nominal Ø	Pitch	Outer ø D1 [mm]	Total length L1 [mm]	Number of Starts
16	05	28 / 32 *	74	1
	10	28 / 32 *	96	2
	20	28 / 32 *	74	4
20	05	35	73	1
	10	35	73	2
	20	35	73	4
	20 (long)	35	113	4
25	05	40	77.5	1
	05 (long)	40	97.5	1
	10	40	77.5	2
	10 (long)	40	97.5	2
	25	40	77.5	5
	25 (long)	40	127.5	5
32	05	50	95	1
	10	50	125	2
	20	50	115	4

The remaining technical data are the same as for single nuts.

* KGM-MM Ø 28
KGM-FM Ø 32