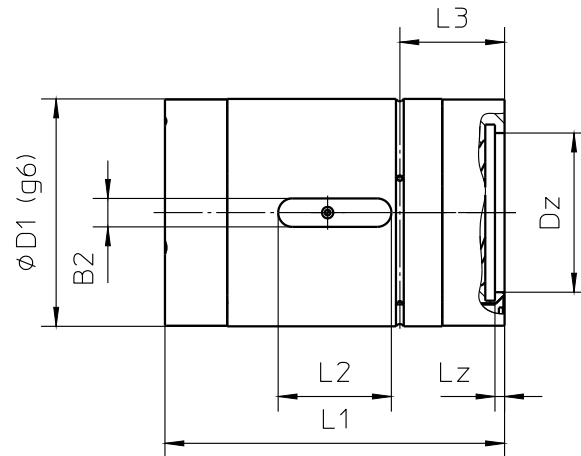
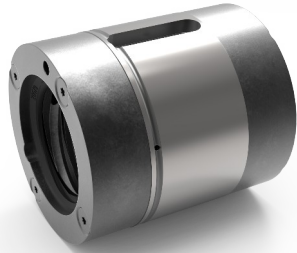


Cylindrical ball screw nuts HSB (KGM-M)

- Uniform design; for each nominal diameter all nuts have the same outer diameter, drive key slots and centring
- Lubrication can be performed via the drive key and lubrication groove
- Newly developed ball recirculation cover with optimised recirculation geometry for high operating speeds
- Made of the best materials and to the highest precision for optimum running characteristics and high load ratings
- Double nut units (KGM-MM) with predefined pre-load (3 %, 5 % or 7 % of the dynamic load rating)



Nominal Ø	Pitch	Outer ø D1 [mm]	Overall length L1 [mm]	Lubrication groove L3 [mm]	Number of starts	Drive key slots			Centring		Load rating	
						B2 x	L2 x	T	Dz	Lz	C0 [kN]	C [kN]
12	05	24	26	11.00	1	3	6	1.5	13.0	3	5.6	3.8
	10	24	26	10.00	2	3	6	1.5	13.0	1.2	6.8	4.3
16	05	28	34	12.60	1	5	10	2	17.5	1.5	16.9	10.5
	10	28	45	16.25	2	5	10	2	17.5	1.5	24.5	14.3
	20	28	34	14.00	4	5	10	2	17.5	1.5	13.0	8.1
	40	28	45	14.50	4	5	10	2	17.5	0.5	13.0	8.5
20	05	35	34	13.00	1	5	10	3	23.0	2	25.4	14.6
	10	35	34	13.00	2	5	10	3	23.0	1.6	23.4	13.5
	20	35	34	13.00	4	5	10	3	23.0	2	19.8	11.5
	20 (lang)	35	54	15.00	4	5	20	3	23.0	2	46.6	23.9
	50	35	56	15.00	5	5	20	3	23.0	2	24.6	12.3
25	05	40	35	13.38	1	5	10	3	28.0	2.4	31.8	16.1
	05 (lang)	40	45	13.38	1	5	20	3	28.0	2.4	49.0	23.3
	10	40	35	13.40	2	5	10	3	28.0	2	29.7	15.1
	10 (lang)	40	45	13.40	2	5	20	3	28.0	2	46.8	22.3
	25	40	35	13.40	5	5	10	3	28.0	0.8	32.2	15.8
	25 (lang)	40	60	19.00	5	5	20	3	28.0	0.8	75.1	32.7
32	05	50	45	13.60	1	6	20	3	35.0	2.1	63.6	26.2
	10	50	60	17.20	2	6	20	3	35.0	2	83.8	33.1
	20	50	55	15.50	4	6	20	3	35.0	2.1	75.9	30.2
	40	50	50	13.60	4	6	20	3	35.0	2.1	35.2	15.2
	60	50	65	18.00	6	6	20	3	35.0	2.2	46.8	18.4
40	10	63	70	19.75	1	6	30	2.5	44.0	1.5	95.2	44.8
	20	63	80	21.00	2	6	30	2.5	44.0	1.5	104.8	48.0
	40	63	95	21.00	4	6	30	2.5	44.0	1.5	142.8	61.6

¹ To ISO 3408-5 (formerly DIN 69051-4)