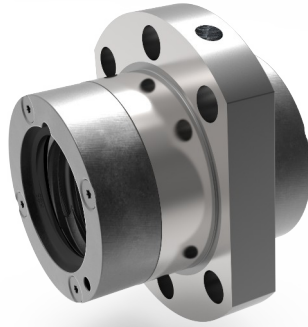
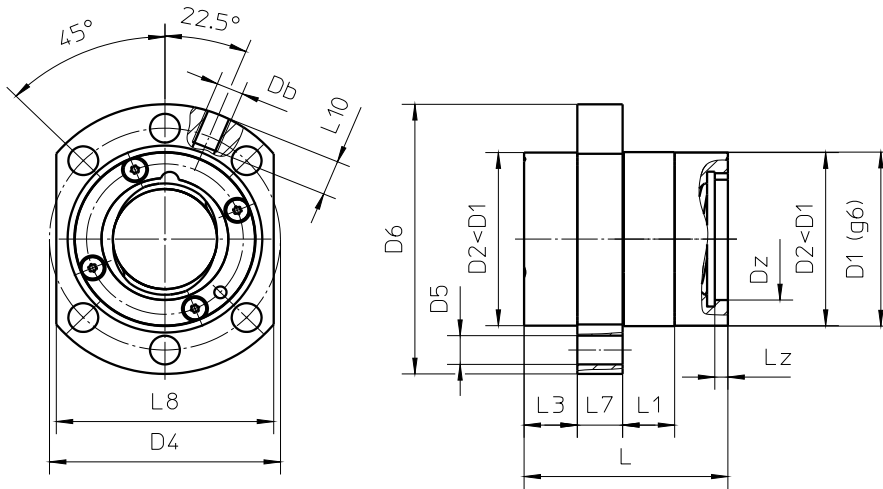


Ball screw flanged nuts HSB (KGM-F) (to ISO 3408-2 / DIN 69051-5)

- All connection dimensions to ISO3408 / DIN 69051, for easy adaptation
- Newly developed ball recirculation cover with optimised recirculation geometry for high operating speeds
- Made of the best materials and to the highest precision for optimum running characteristics and high load ratings
- Double nut units (KGM-FM) with predefined pre-load (3 %, 5 % or 7 % of the dynamic load rating)



Nominal Ø	Pitch	Outer ø	Total length	Number of	Centring length	Projection	Flange thickness	Width across flats
		D1 [mm]	L [mm]	Starts	L1 [mm]	L3 [mm]	L7 [mm]	L8 [mm]
12	05	24	26	1	2.75	8.63	6	26
	10	24	26	2	6.50	6.75	6	26
16	05	28	34	1	4.50	9.75	10	40
	10	32	45	2	13.45	10.75	10	40
	20	32	34	4	3.00	11.50	8	40
	40	32	45	4	10.00	10.00	10	40
20	05	36	34	1	4.75	10.63	8	44
	10	36	34	2	3.50	11.25	8	44
	20	36	34	4	3.00	11.50	8	44
	20 (long)	36	54	4	10.00	11.50	10	44
	50	36	56	5	10.00	12.00	10	44
25	05	40	35	1	2.75	11.13	10	48
	05 (long)	40	45	1	12.75	11.13	10	48
	10	40	35	2	3.50	11.75	8	48
	10 (long)	40	45	2	11.50	11.75	10	48
	25	40	35	5	3.00	11.00	10	48
	25 (long)	40	60	5	10.00	11.00	10	48
	50	40	58	5	10.00	13.00	10	48
32	05	50	45	1	10.25	11.38	12	62
	10	50	60	2	19.70	14.15	12	62
	20	50	55	4	17.00	13.50	12	62
	40	50	50	4	14.80	11.60	12	62
	60	50	65	6	15.00	13.50	12	62
40	10	63	70	1	21.50	17.25	14	70
	20	63	80 (100)	2	15.0 (20.0)	18.50	14	70
	40	63	95	4	20.00	18.50	14	70



Pitch circle ø D4 [mm]	Attachment hole D5 [mm]	Flange ø D6 [mm]	Hole ø Db	Centring		Load rating ¹	
				Dz	Lz	stat. C0 [kN]	dyn. C [kN]
32	4.5	40	-	13.0	3.0	5.6	3.8
32	4.5	40	-	13.0	1.2	6.8	4.3
38	5.5	52	M6	17.5	1.5	19.9	12.8
42	5.5	52	M6	17.5	1.5	24.4	14.3
42	5.5	52	M6	17.5	1.5	13.0	8.1
42	5.5	52	M6	17.5	0.5	13.0	8.5
47	6.6	58	M6	23.0	2.0	25.4	14.6
47	6.6	58	M6	23.0	1.6	23.4	13.5
47	6.6	58	M6	23.0	2.0	19.8	11.5
47	6.6	58	M6	23.0	2.0	46.6	23.9
47	6.6	58	M6	23.0	2.0	24.6	12.3
51	6.6	62	M6	28.0	2.4	31.8	16.1
51	6.6	62	M6	28.0	2.4	49.0	23.3
51	6.6	62	M6	28.0	2.0	29.7	15.1
51	6.6	62	M6	28.0	2.0	46.8	22.3
51	6.6	62	M6	28.0	0.8	32.2	15.8
51	6.6	62	M6	28.0	0.8	75.1	32.7
51	6.6	62	M6	28.0	1.5	31.6	14.5
65	9.0	80	M6	35.0	2.1	63.6	26.2
65	9.0	80	M6	35.0	2.0	83.8	33.1
65	9.0	80	M6	35.0	2.1	75.9	30.2
65	9.0	80	M6	35.0	2.1	35.2	15.2
65	9.0	80	M6	35.0	2.2	46.8	18.4
78	9.0	93	M8x1	44.0	1.5	95.2	44.8
78	9.0	93	M8x1	44.0	1.5	104.8 (150.7)	48 (65.6)
78	9.0	93	M8x1	44.0	1.5	142.8	61.6

¹ To ISO 3408-5 (formerly DIN 69051-4)