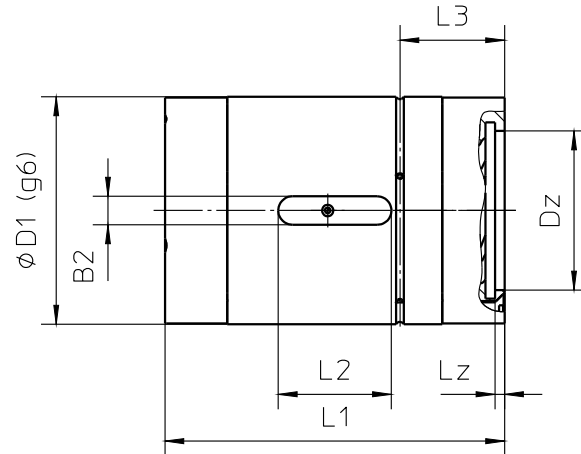


Cylindrical ball screw nuts HSB (KGM-M)

- Uniform design; for each nominal diameter all nuts have the same outer diameter, drive key slots and centring
- Lubrication can be performed via the drive key and lubrication groove
- Newly developed ball recirculation cover with optimised recirculation geometry for high operating speeds
- Made of the best materials and to the highest precision for optimum running characteristics and high load ratings
- Double nut units (KGM-MM) with predefined pre-load (3 %, 5 % or 7 % of the dynamic load rating)



Nominal \varnothing	Pitch	Outer \varnothing D1 [mm]	Overall length L1 [mm]	Lubrication groove L3 [mm]	Number of starts	Drive key slots			Centring		Load rating	
						B2 x	L2 x	T	Dz	Lz	stat. C0 [kN]	dyn. C [kN]
12	05	24	26	11	1	3	6	1.5	13.0	3	5.60	3.80
	10	24	26	10	2	3	6	1.5	13.0	1.2	6.80	4.30
16	05	28	34	12.6	1	5	10	2	17.5	1.5	16.90	10.50
	10	28	45	16.3	2	5	10	2	17.5	1.5	24.50	14.30
	20	28	34	14.0	4	5	10	2	17.5	1.5	13.00	8.10
	40	28	45	14.5	4	5	10	2	17.5	0.5	13.00	8.50
20	05	35	34	13.0	1	5	10	3	23.0	2.0	25.40	14.60
	10	35	34	13.0	2	5	10	3	23.0	1.6	23.40	13.50
	20	35	34	13.0	4	5	10	3	23.0	2.0	19.80	11.50
	20 (long)	35	54	15.0	4	5	20	3	23.0	2.0	46.60	23.90
	50	35	56	15.0	5	5	20	3	23.0	2.0	24.60	12.30
25	05	40	35	13.4	1	5	10	3	28.0	2.4	31.80	16.10
	05 (long)	40	45	13.4	1	5	20	3	28.0	2.4	49.00	23.30
	10	40	35	13.4	2	5	10	3	28.0	2.0	29.70	15.10
	10 (long)	40	45	13.4	2	5	20	3	28.0	2.0	46.80	22.30
	25	40	35	13.4	5	5	10	3	28.0	0.8	32.20	15.80
	25 (long)	40	60	19.0	5	5	20	3	28.0	0.8	75.10	32.70
	50	40	58	18.0	5	5	20	3	28.0	1.5	31.60	14.50
32	05	50	45	13.6	1	6	20	3	35.0	2.1	63.60	26.20
	10	50	60	17.2	2	6	20	3	35.0	2.0	83.80	33.10
	20	50	55	15.5	4	6	20	3	35.0	2.1	75.90	30.20
	40	50	50	13.6	4	6	20	3	35.0	2.1	35.20	15.20
	60	50	65	18.0	6	6	20	3	35.0	2.2	46.80	18.40

¹ To ISO 3408-5 (formerly DIN 69051-4)