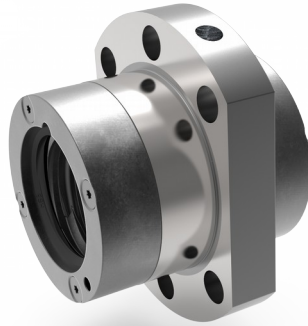


Ball screw flanged nuts HSB (KGM-F) (to DIN 69051-5)

- All connection dimensions to DIN 69051, for easy adaptation
- Newly developed ball recirculation cover with optimised recirculation geometry for high operating speeds
- Made of the best materials and to the highest precision for optimum running characteristics and high load ratings
- Double nut units (KGM-FM) with predefined pre-load (3 %, 5 % or 7 % of the dynamic load rating)



Nominal Ø	Pitch	Outer ø	Total length	Number of	Centring length	Projection	Flange thickness	Width across flats
		D1 [mm]	L [mm]	Starts	L1 [mm]	L3 [mm]	L7 [mm]	L8 [mm]
12	05	24	26	1	2.75	8.63	6	26
	10	24	26	2	6.50	6.75	6	26
16	05	32	34	1	4.50	9.75	10	40
	10	32	45	2	13.45	10.75	10	40
	20	32	34	4	3.00	11.50	8	40
	40	32	45	4	10.00	10.00	10	40
20	05	36	34	1	4.75	10.63	8	44
	10	36	34	2	3.50	11.25	8	44
	20	36	34	4	3.00	11.50	8	44
	20 (long)	36	54	4	10.00	11.50	10	44
	50	36	56	5	10.00	12.00	10	44
25	05	40	35	1	2.75	11.13	10	48
	05 (long)	40	45	1	12.75	11.13	10	48
	10	40	35	2	3.50	11.75	8	48
	10 (long)	40	45	2	11.50	11.75	10	48
	25	40	35	5	3.00	11.00	10	48
	25 (long)	40	60	5	10.00	11.00	10	48
	50	40	58	5	10.00	13.00	10	48
32	05	50	45	1	10.25	11.38	12	62
	10	50	60	2	19.70	14.15	12	62
	20	50	55	4	17.00	13.50	12	62
	40	50	50	4	14.80	11.60	12	62
	60	50	65	6	15.00	13.50	12	62