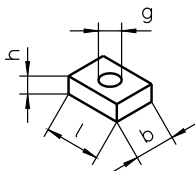


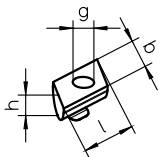
### Profil Gamma 280

spezifische Masse [kg/m]	45,00
Flächenmaß [mm <sup>2</sup> ]	16668
Flächenträgheitsmoment I <sub>y</sub> [mm <sup>4</sup> ]	51584879
Flächenträgheitsmoment I <sub>z</sub> [mm <sup>4</sup> ]	145637924
Widerstandsmoment W <sub>y</sub> [mm <sup>3</sup> ]	593375
Widerstandsmoment W <sub>z</sub> [mm <sup>3</sup> ]	1040245

### NS 6 .. 21



### NS 24



Portal-Linereinheit	NS	Ident.-Nr.	l [mm]	b [mm]	h [mm]	g
Gamma 90	21	22955	20	10	5	M6
	18	23951	20	16	8	M5
Gamma 120	19	23950	20	16	8	M6
	20	23949	20	16	8	M8
	19	23950	20	16	8	M6
Gamma 160	15	19211	25	18	8	M8
	6	10561	25	18	8	M10
	24	16772	25	17	9,5	M10
	18	23951	20	16	8	M5
Gamma 220	19	23950	20	16	8	M6
	15	19211	25	18	8	M8
	6	10561	25	18	8	M10
	24	16772	25	17	9,5	M10
	19	23950	20	16	8	M6
Gamma 280	15	19211	25	18	8	M8
	6	10561	25	18	8	M10
	24	16772	25	17	9,5	M10
	17	19722	30	20	10	M12