

Example: Gamma 160-AZSS-M2-200-1000-1630-2EO2-8NS6-1

Product

Unit size

Drive

AZ = Rack-and-pinion drive

Guide system

S = Rail guide

Model

S = Standard (Horizontal)

H = Lifting axis (Vertical)

Drive specifications

Drive pinion module (M2 / M3)

Stroke per revolution

Stroke

Total length

Accessories

EO2 / EO10 = Inductive limit switch NC with 2m / 10m cable fitted

ES2 / ES10 = Inductive limit switch NO with 2m / 10m cable fitted

EMS / EMB = Mechanical limit switch (S = Siemens, B = Balluff) fitted

NS = Sliding block 5 .. 17 (see Table on page G27)

Special design

0 = Standard

1 = Special (add specification description)

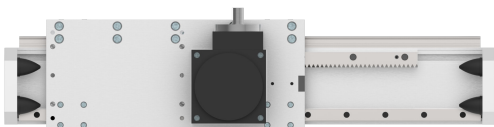
Additional information

Gear size and ratio (D55 to D115 / i = 5 to i = 15)

Gear mounting (for example XD)

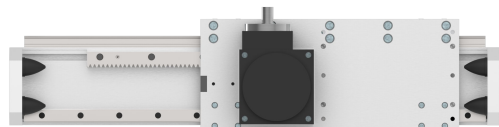
Gear mounting

Carriage „standard“

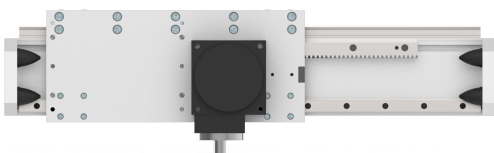


Gear side: B
Gear version (1L): X
With motor mounting side: D

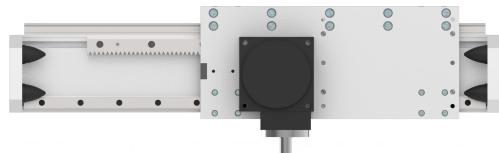
Carriage „mirrored“



Gear side: A
Gear version (3L): L
With motor mounting side: D



Gear side: B
Gear version (1L): X
With motor mounting side: C



Gear side: A
Gear version (3L): L
With motor mounting side: C