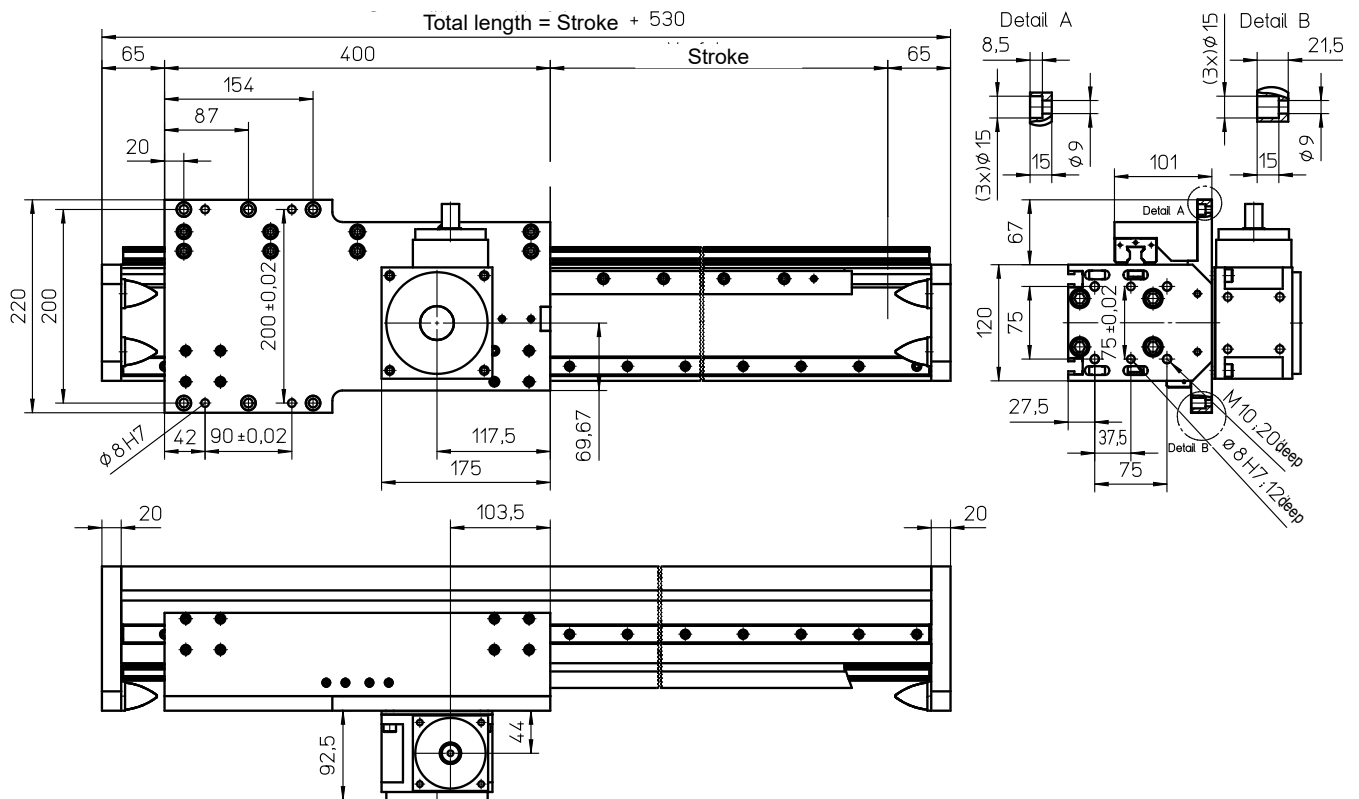


with rack-and-pinion drive (helical) and double linear guide (AZSH)



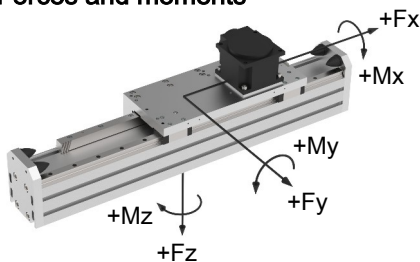
### Weights

	AZSH
Basic length without stroke:	26.10 kg*
100 mm stroke:	2.10 kg
Carriage 400 mm:	8.45 kg
Gear D75:	6.30 kg
Max. total length: (longer on request)	8000 mm

### Technical Data

	AZSH
Max. speed:	5.00 m/s
Max. acceleration:	20 m/s <sup>2</sup>
Repeat accuracy:	± 0.05 mm
Idle torque at drive pinion:	4.80 Nm
Rack and pinion:	Module 2 helical
Drive pinion:	Module 2, 30 teeth
Stroke per pinion revolution:	200 mm
Servo-high-performance- gear:	DynaGear D75
Ratios:	5 / 10 / 15

### Forces and moments



AZSH-D75	
Forces	Dynamic [N]
$F_x$	1500-2200 **
$F_y$	8000
$F_z$	8000
Moments	Dynamic [Nm]
$M_x$	1500
$M_y$	4000
$M_z$	4000

D75	
Load $F_x$	Dynamic [N]
$i = 5:1$	2200
$i = 10:1$	
$i = 15:1$	1500

Efficiency of gears: > 96 %

Variants for gear mounting see page G29.

\* inclusive gear

\*\* depending on gear ratio (see table to right)