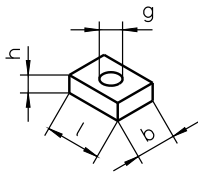
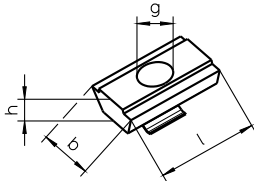


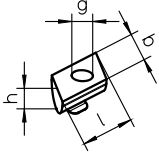
NS 1 / 2 / 4 / 6 / 22 / 23



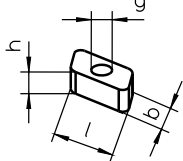
NS 4.1 / 10



RM 2 / 4 / 6

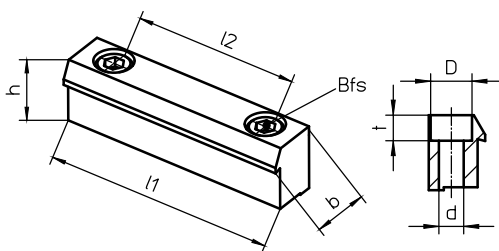


NS 24



Linear drive	Page *	NS	ID No.	l [mm]	b [mm]	h [mm]	g
Delta 110-C	E	22	27352	18	12	4.5	M5
		23	28914	18	12	4.5	M6
		RM2	15370	10	6	4	M4
Delta 145-C	E	4	10559	18	14	6	M8
		4.1	16552	20	13	6	M8
		10	16499	20	13	6	M6
		RM4	15371	13	8	6	M5
Delta 200	E	6	10561	25	18	8	M10
		RM6	15372	18	10	8	M6
	C and D below	4	10559	18	14	6	M8
		4.1	16552	20	13	6	M8
		10	16499	20	13	6	M6
	C and D below	1	10556	12	10	4	M4
2		10557	16	10	4	M5	
Delta 240	E	6	10561	25	18	8	M10
		24	16772	25	17	9.5	M10
		RM6	15372	18	10	8	M6
	C and D	1	10556	12	10	4	M4
		2	10557	16	10	4	M5
Delta 240-C	E	6	10561	25	18	8	M10
		24	16772	25	17	9.5	M10
		RM6	15372	18	10	8	M6

BL 1..4 / 8 / 10



Linear drive	BL	ID No.	l1 [mm]	l2 [mm]	b [mm]	h [mm]	Bfs	D [mm]	d [mm]	t [mm]
Delta 90	8	18447	70	50	15	13,5	M6	11	6,6	6,8
Delta 110-C	1.1	13224	49	30	15	17,5	M6	11	6,6	6,8
	1	10552	70	50	15	17,5	M6	11	6,6	6,8
Delta 145-C	2	10553	70	50	15	20	M6	11	6,6	6,8
Delta 200	3	10554	80	60	25	30	M8	15	9	9
Delta 240	4	10555	70	50	16	20	M6	11	6,6	6,8
Delta 240-C	10	17326	70	50	15	18,5	M6	11	6,6	6,8

* For further information on pages C..E, see catalogue page Z1
 Bfs = Mounting screw DIN 912 / ISO 4762