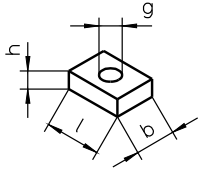
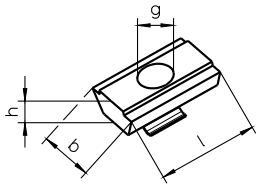


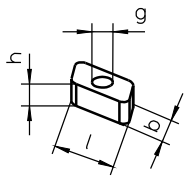
**NS 1 / 2 / 4 / 6 /
22 / 23**



NS 4.1 / 10

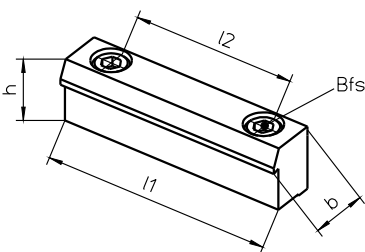


RM 2 / 4 / 6



Lineareinheit	Seite *	NS	Ident.-Nr.	l [mm]	b [mm]	h [mm]	g
Delta 110-C	E	23	28914	18	12	4,5	M6
		22	27352	18	12	4,5	M5
		RM2	15370	10	6	4	M4
Delta 145-C	E	4	10559	18	14	6	M8
		4.1	16552	20	13	6	M8
		10	16499	20	13	6	M6
		RM4	15371	13	8	6	M5
Delta 200	E	6	10561	25	18	8	M10
		RM6	15372	18	10	8	M6
	C und D unten	4	10559	18	14	6	M8
		4.1	16552	20	13	6	M8
		10	16499	20	13	6	M6
	C und D oben	RM4	15371	13	8	6	M5
		1	10556	12	10	4	M4
	2	10557	16	10	4	M5	
Delta 240	E	6	10561	25	18	8	M10
		RM6	15372	18	10	8	M6
	C und D	1	10556	12	10	4	M4
		2	10557	16	10	4	M5
		RM2	15370	10	6	4	M4
Delta 240-C	E	6	10561	25	18	8	M10
		RM6	15372	18	10	8	M6

BL 1..4 / 8 / 10



Lineareinheit	BL	Ident.-Nr.	l1 [mm]	l2 [mm]	b [mm]	h [mm]	Bfs
Delta 90	8	18447	70	50	15	13,5	M6
Delta 110-C	1.1	13224	49	30	15	17,5	M6
	1	10552	70	50	15	17,5	M6
Delta 145-C	2	10553	70	50	15	20	M6
Delta 200	3	10554	80	60	25	30	M8
Delta 240	4	10555	70	50	16	20	M6
Delta 240-C	10	17326	70	50	15	18,5	M6

* Erläuterung der Seite C..E siehe Katalogseite Z1
Bfs = Befestigungsschraube DIN 912 / ISO 4762