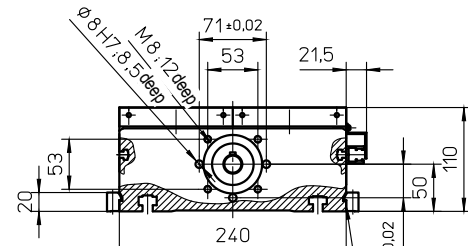
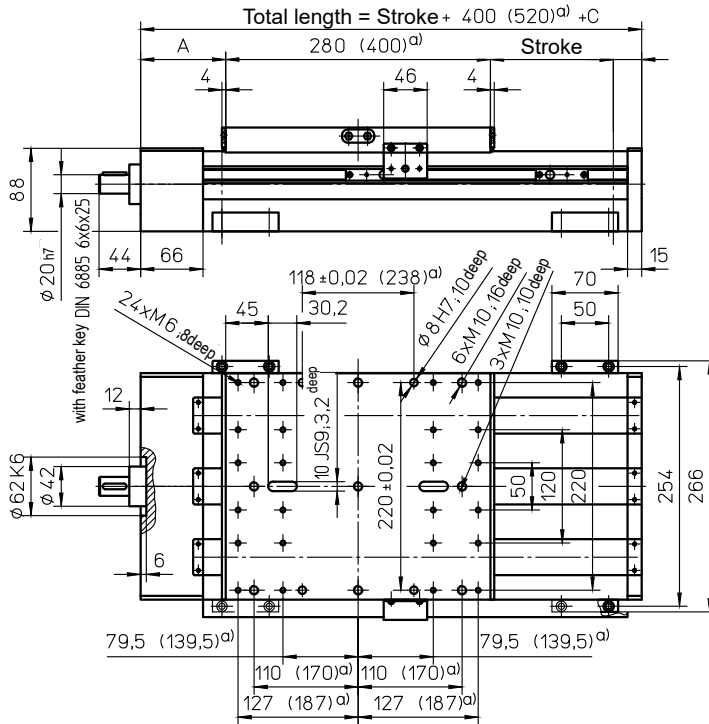


with ball screw (KGT) and double linear guide (SSS)



a) Data in brackets refer to long carriage  
Stop angle  
Mounting elements see page D16

Quantity SA	Version M			Version MM		
	A	B	C	A	B	C
0	90	30	-	90	30	-
2						
4	130	70	80	130	70	80

"0 SA" applies for long carriage

### Weights

### SSS

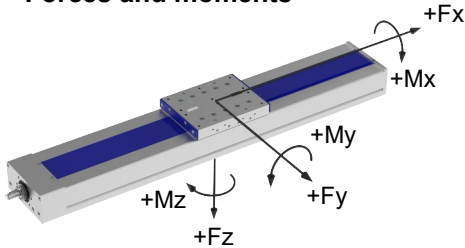
Basic length without stroke:	26.00 kg
100 mm stroke:	3.90 kg
Entire carriage 280 mm:	10.20 kg
Entire carriage 400 mm:	14.60 kg
Max. total length:	3000 mm

### Technical Data

### SSS

Max. total speed:	3.00 m/s
Max. acceleration:	20 m/s <sup>2</sup>
Repeat accuracy:	$\pm 0.03$ mm (KGT)
Idle torque:	2.80 Nm

### Forces and moments



SSS	
<b>Forces</b>	Dynamic [N]
F <sub>x</sub>	12000 *
F <sub>y</sub>	6000
F <sub>z</sub>	12000
-F <sub>z</sub>	8000
<b>Moments</b>	Dynamic [Nm]
M <sub>x</sub>	4500
M <sub>y</sub>	6000 (8500)
M <sub>z</sub>	4500 (6400)

Data in brackets refer to long carriage (400)

\* at KGT3240 and 3260: 8000 N

### Drive element

### KGT

Max. rotation speed:	3000 min <sup>-1</sup>
Diameter:	32 mm
Pitch:	5 / 10 / 20 / 40 / 60 mm
Moment of inertia:	$6.39 \cdot 10^{-4}$ kgm <sup>2</sup> /m

### Spindle support (SA)

