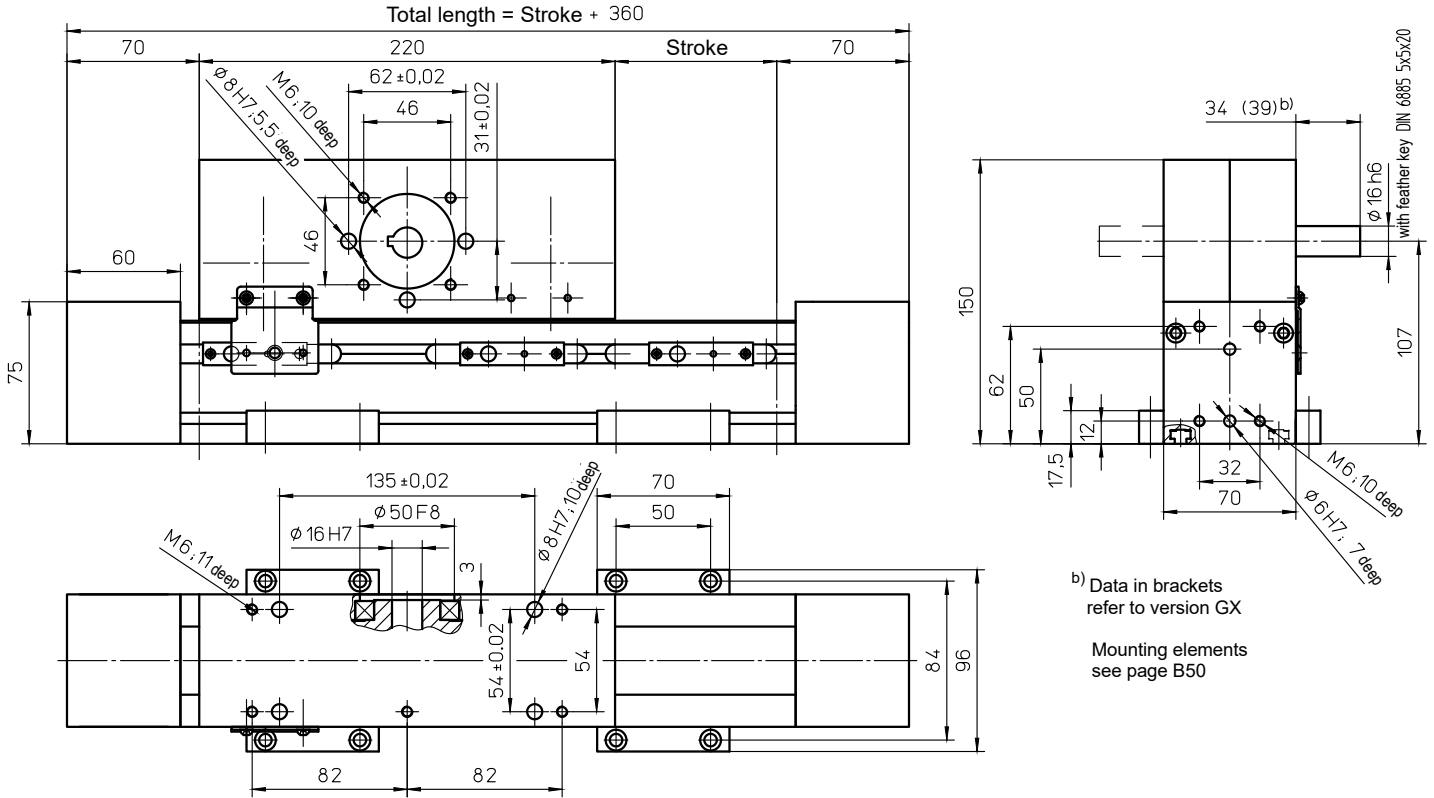


with toothed belt drive and roller guide (ARS) or rail guide (ASS)



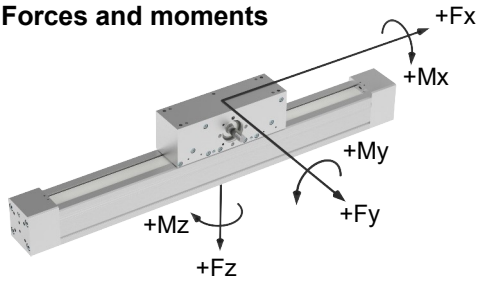
b) Data in brackets refer to version GX
Mounting elements see page B50

Weights	ARS	ASS
Basic length without stroke:	7.50 kg	7.90 kg
100 mm stroke:	0.44 kg	0.59 kg
Carriage drive 220 mm:	5.00 kg	5.50 kg

Max. total length: 8000 mm
(longer on request)

Technical Data	ARS	ASS
Max. speed:		5.00 m/s
Max. acceleration:		30 m/s ²
Repeat accuracy:		± 0.08 mm
Idle torque:		1.00 Nm
Moment of inertia:		6.10 · 10 ⁻³ kgm ²
Drive element:		Toothed belt 32 AT5-E
Stroke per revolution:		220 mm

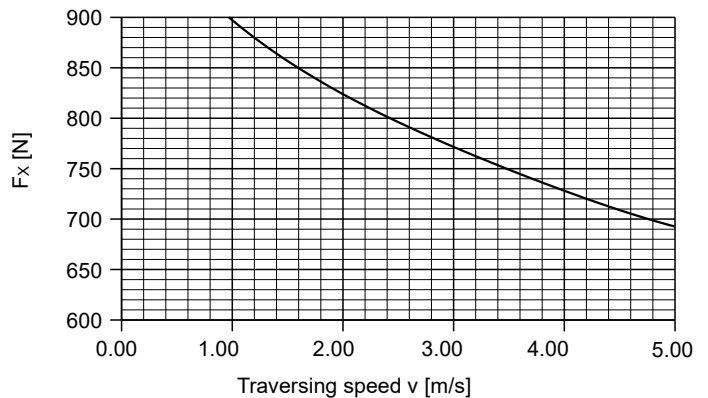
Forces and moments



	ARS	ASS
Forces	Dynamic [N]	
F _x ^{d)}	900	
F _y	300	600
F _z	1000	1800
-F _z	400	1200
Moments	Dynamic [Nm]	
M _x	35	60
M _y	120	180
M _z	50	120

^{d)} Maximum value (see diagram "F_x-v-Diagram")

F_x - v - Diagram



For mechanical linear drives with roller guide, the static load rating "C_{stat}" (page TL 11) applies for static loads.