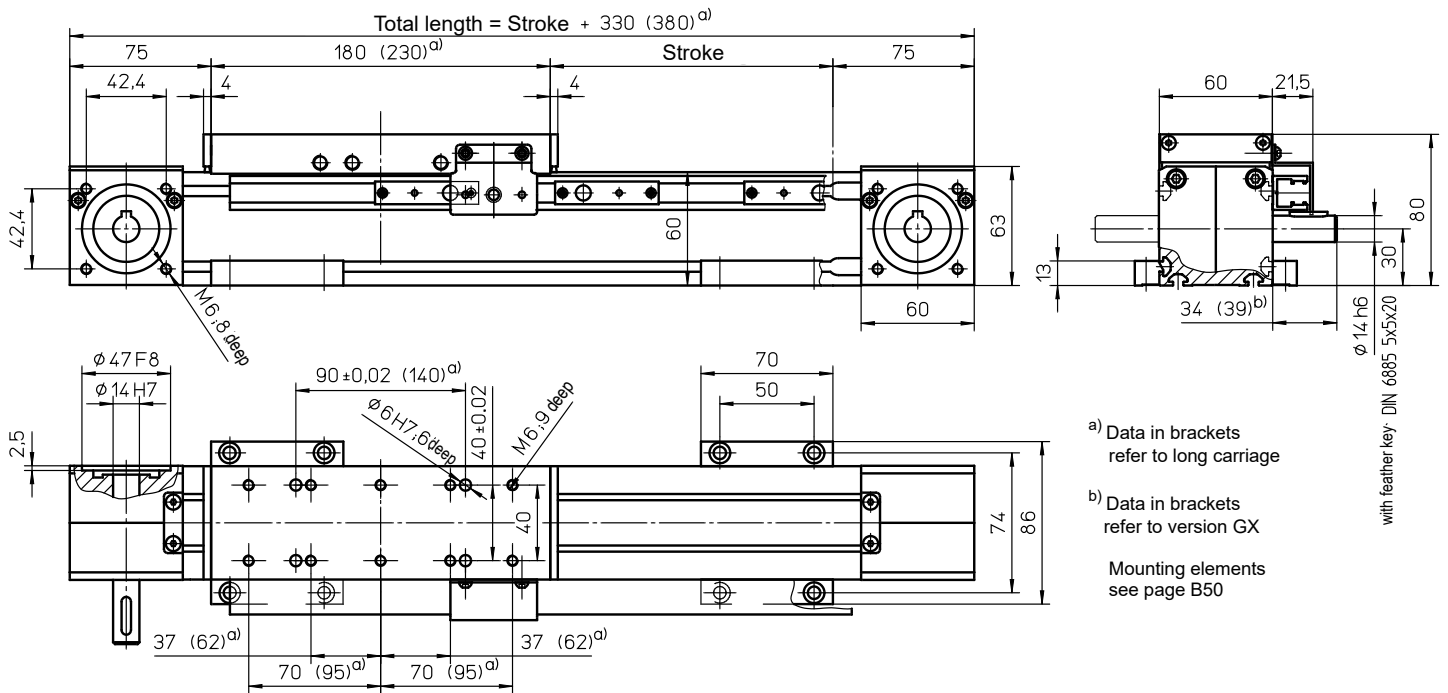


with toothed belt drive and rail guide (ZSS)



Weights

ZSS

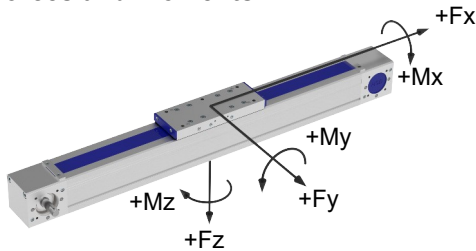
Basic length without stroke:	4.55 kg
100 mm stroke:	0.59 kg
Entire carriage 180 mm:	1.22 kg
Entire carriage 230 mm:	1.72 kg
Max. total length: (longer on request)	8000 mm

Technical Data

ZSS

Max. speed:	5.00 m/s
Max. acceleration:	30 m/s ²
Repeat accuracy:	± 0.08 mm
Idle torque:	1.10 Nm
Moment of inertia:	$2.00 \cdot 10^{-4}$ kgm ²
Drive element:	Toothed belt 25 AT5-E
Stroke per revolution:	160 mm

Forces and moments



ZSS	
Forces	Dynamic [N]
$F_x^{d)}$	850
F_y	500
F_z	1400
$-F_z$	800
Moments	Dynamic [Nm]
M_x	50
M_y	160 (200)
M_z	100 (140)

^{d)} Maximum value (see diagram "F_x-v-Diagram")
 Data in brackets refer to long carriage (230)

F_x - v - Diagram

