

Technical Drawing of the 80K6 Hydraulic Cylinder

Top View (Front View):

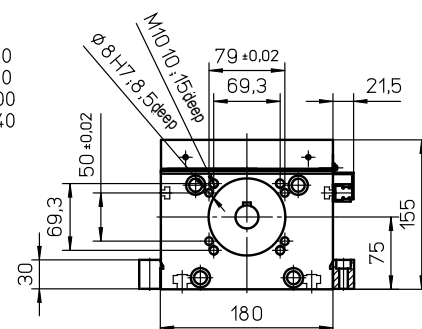
- Total length:** $\text{Stroke} + 570 \text{ (790)}^a$
- Extension by 2SA mm for every 80 mm**
- Dimensions:** 110, 380 (600)^a, 80, 4, 202, 46, 4, 120, 20, 60, 75.
- Stroke:** Indicated by a dimension line.
- Port Dimensions:** $\phi 24 \text{ h7}$, 6885 8x7x30 .
- Port Material:** with feather key DIN 6885 8x7x30.

Side View:

- Dimensions:** 300 (520)^a, $260 \pm 0,02 \text{ (480)}^a$, 80, 60, 150 $\pm 0,02$, 202, 224, 75 (185)^a, 75 (185)^a, 5, 17.
- Port Dimensions:** $\phi 80 \text{ K6}$, $\phi 53$.
- Port Material:** with feather key DIN 6885 8x7x30.
- Internal Features:** $\phi 8 \text{ H7 } 12 \text{ deep}$, $M10, 15 \text{ deep}$.

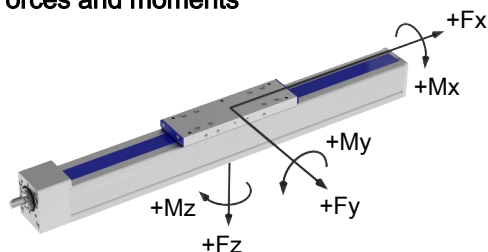
Port Material Specifications:

- for 2SA = 150
- for 4SA = 190
- for 6SA = 230
- for 8SA = 270
- for 2SA = 120
- for 4SA = 160
- for 6SA = 200
- for 8SA = 240



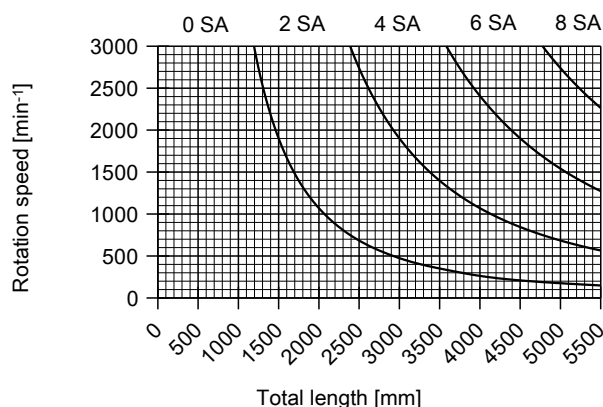
Mounting elements
see page B50

Forces and moments



Drive element	KGT
Max. rotation speed:	3000 min ⁻¹
Diameter:	32 mm
Pitch:	5 / 10 / 20 / 40 / 60 mm
Moment of inertia:	6.39 · 10 ⁻⁴ kgm ² /m

Spindle support (SA)



Special design: Spindle support with damping ring (extension of total length: 10 mm for every 2 SA)