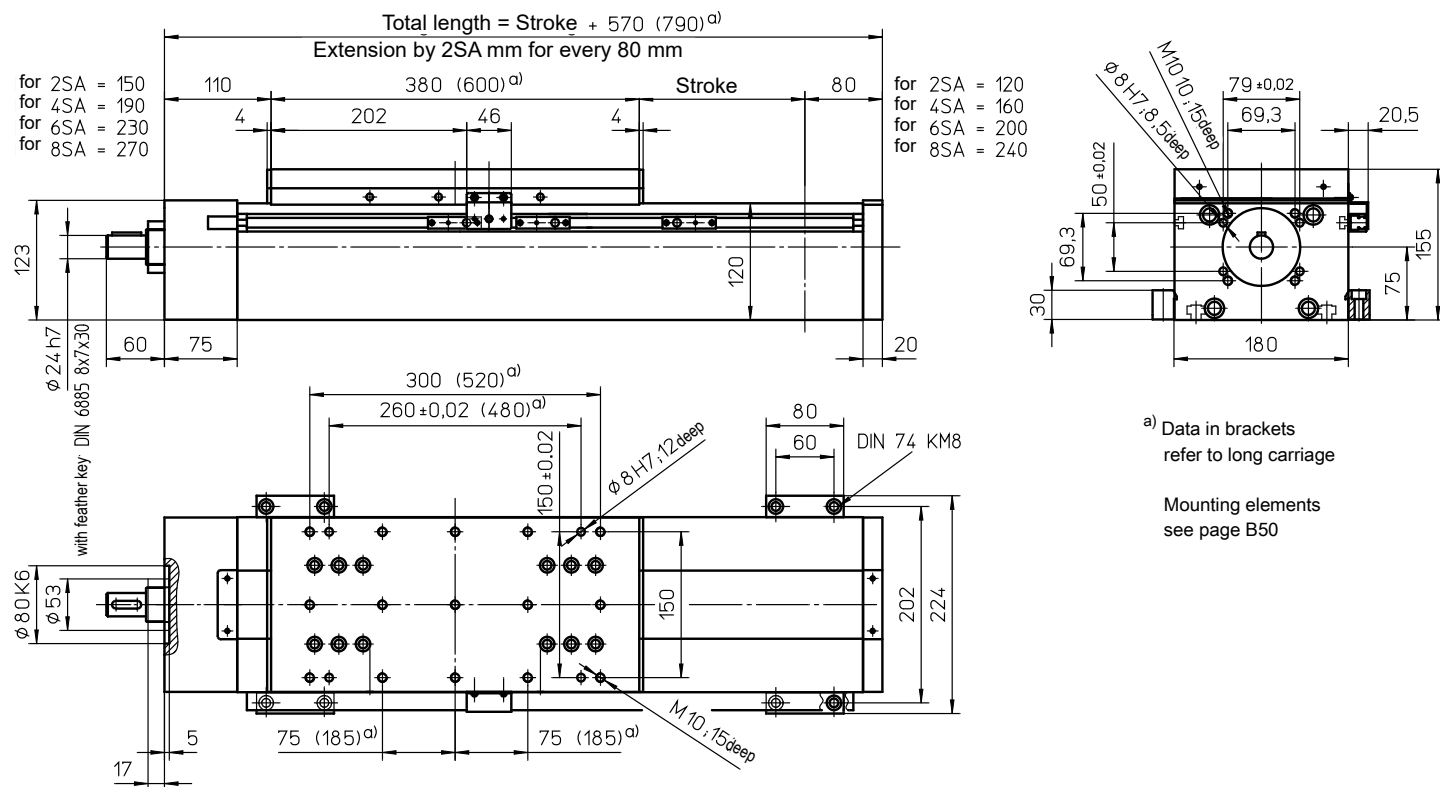


with ball screw (KGT) and double linear guide (SSS)



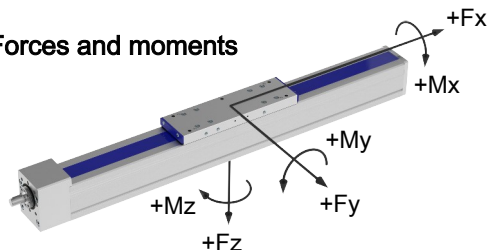
Weights

SSS

Basic length without stroke:	37.00 kg
100 mm stroke:	3.00 kg
Entire carriage drive 380 mm:	14.30 kg
Entire carriage drive 600 mm:	15.40 kg

Max. total length: 5600 mm
(longer on request)

Forces and moments



Forces	SSS Dynamic [N]
$F_x^{d)}$	12000 *
F_y	8000
F_z	15000
$-F_z$	8000
Moments	Dynamic [Nm]
M_x	1800
M_y	3600 (4800)
M_z	1800 (2400)

Data in brackets refer to long carriage plate (600)

* at KGT 3240 and 3260: 8000 N

Technical Data

SSS

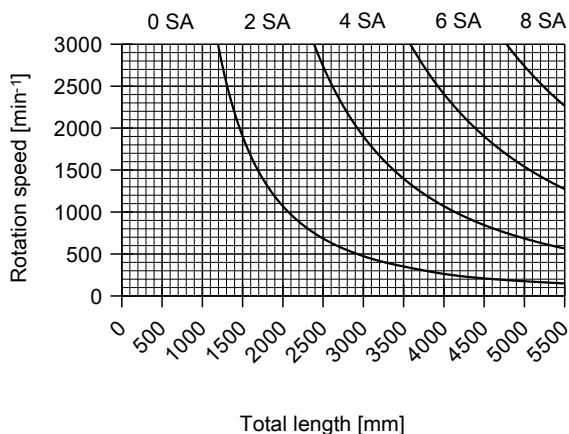
Max. total speed:	3.00 m/s
Max. acceleration:	20 m/s ²
Repeat accuracy:	± 0.03 mm (KGT)
Idle torque:	2.50 Nm

Drive element

KGT

Max. rotation speed:	3000 min ⁻¹
Diameter:	32 mm
Pitch:	5 / 10 / 20 / 40 / 60 mm
Moment of inertia:	$6.39 \cdot 10^{-4}$ kgm ² /m

Spindle support (SA)



Special design: Spindle support with damping ring (extension of total length: 10 mm for every 2 SA)