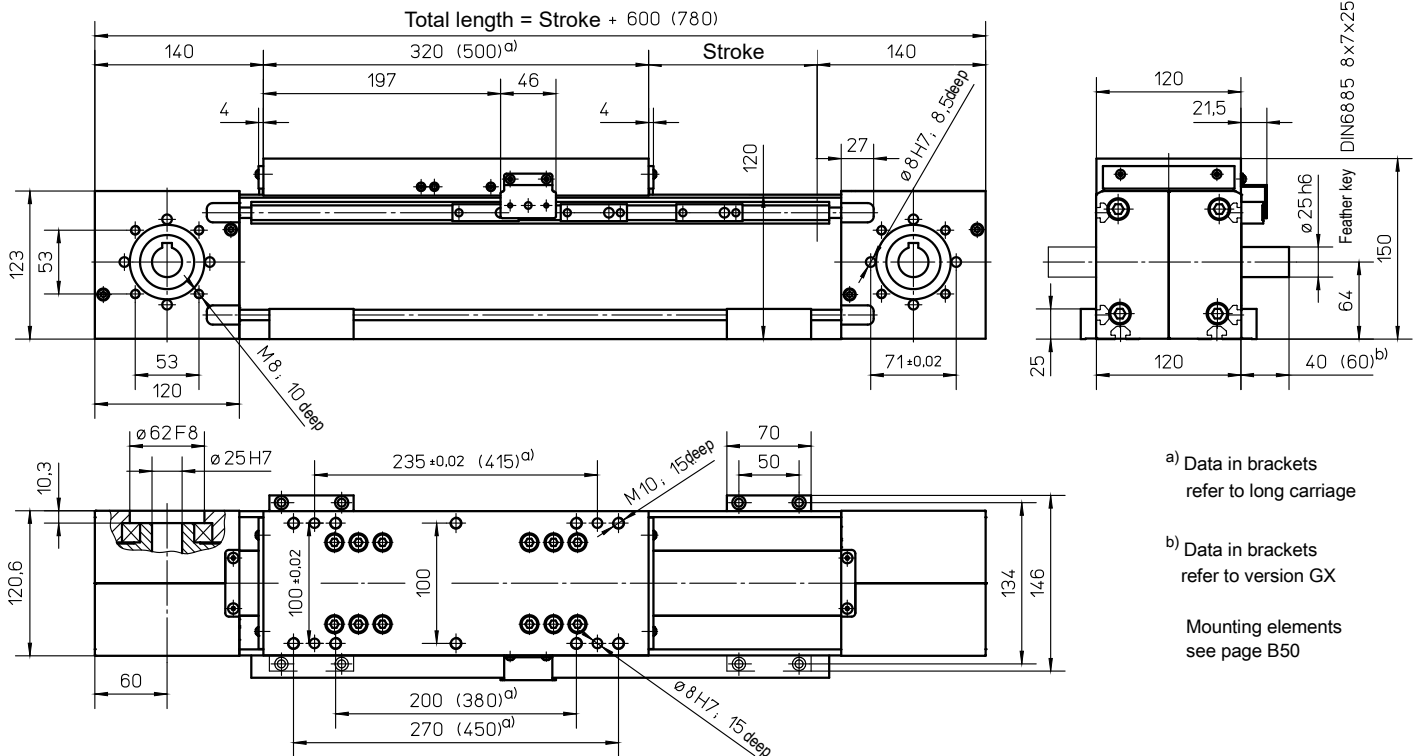


with toothed belt drive and rail guide (ZSS)



a) Data in brackets refer to long carriage

b) Data in brackets refer to version GX

Mounting elements see page B50

Weights

ZSS

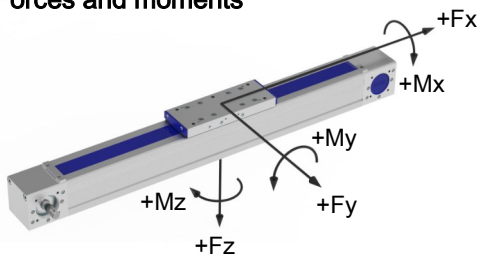
Basic length without stroke:	21.0 kg
100 mm stroke:	2.40 kg
Entire carriage 320 mm:	8.00 kg
Entire carriage 500 mm:	12.00 kg
Max. total length: (longer on request)	8100 mm

Technical Data

ZSS

Max. speed:	5.00 m/s
Max. acceleration:	60 m/s ²
Repeat accuracy:	± 0.08 mm
Idle torque:	4.50 Nm
Moment of inertia:	2.10 · 10 ⁻² kgm ²
Drive element:	Toothed belt 60 ATL10
Stroke per revolution:	300 mm

Forces and moments



ZSS	
Forces	Dynamic [N]
F_x^{d)}	4800
F_y	4000
F_z	12000
-F_z	6000
Moments	Dynamic [Nm]
M_x	600
M_y	1500 (2800)
M_z	1000 (1800)

^{d)} Maximum value (see diagram "F_x-v-Diagram")
Data in brackets refer to long carriage-plate (500)

F_x - v - Diagram

