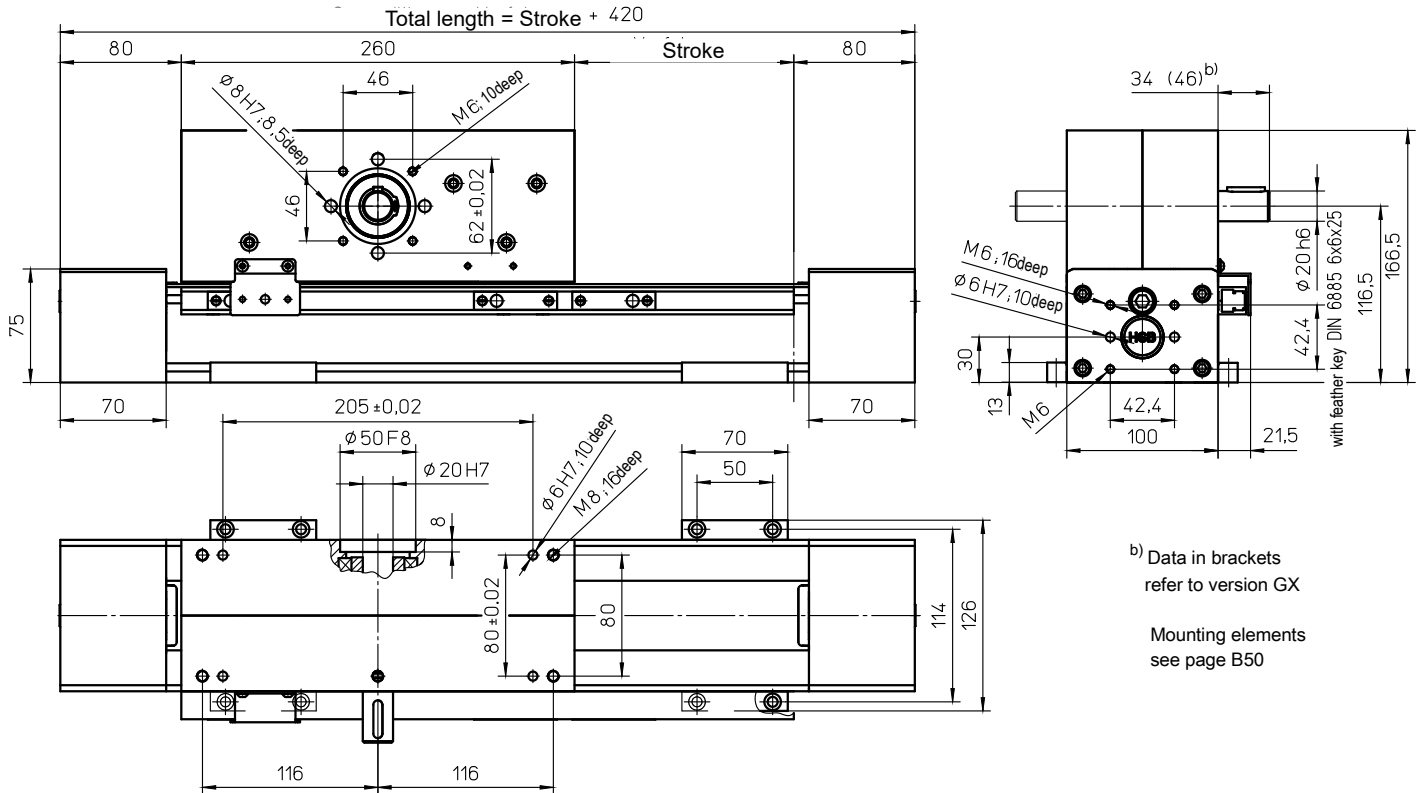


with toothed belt drive and double rail guide (ASS)



b) Data in brackets refer to version GX

Mounting elements see page B50

### Weights

### ASS

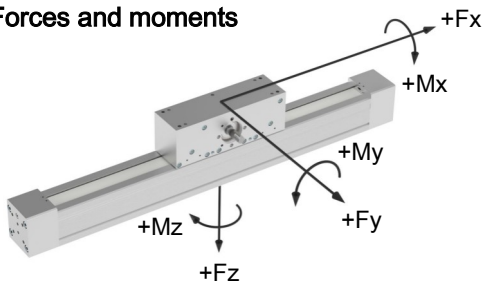
Basic length without stroke:	14.00 kg
100 mm stroke:	0.90 kg
Carriage drive 260 mm:	8.60 kg
Max. total length: (longer on request)	8100 mm

### Technical Data

### ASS

Max. speed:	5.00 m/s
Max. acceleration:	60 m/s <sup>2</sup>
Repeat accuracy:	± 0.08 mm
Idle torque:	2.50 Nm
Moment of inertia:	1.20 · 10 <sup>-2</sup> kgm <sup>2</sup>
Drive element:	Toothed belt <b>40 AT10-E</b>
Stroke per revolution:	240 mm

### Forces and moments



ASS	
<b>Forces</b>	Dynamic [N]
<b>F<sub>x</sub><sup>d)</sup></b>	2200
<b>F<sub>y</sub></b>	1800
<b>F<sub>z</sub></b>	4000
<b>-F<sub>z</sub></b>	3000
<b>Moments</b>	Dynamic [Nm]
<b>M<sub>x</sub></b>	350
<b>M<sub>y</sub></b>	950
<b>M<sub>z</sub></b>	950

<sup>d)</sup> Maximum value (see diagram "F<sub>x</sub>-v-Diagram")

### F<sub>x</sub> - v - Diagram

