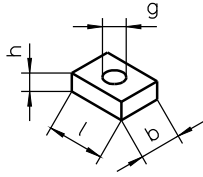
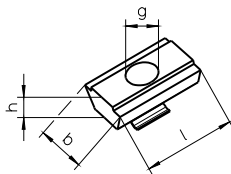


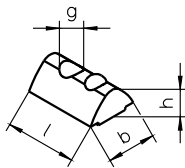
NS 1 - 7 / 11



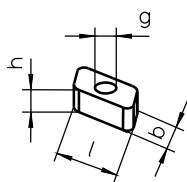
NS 4.1 / 10



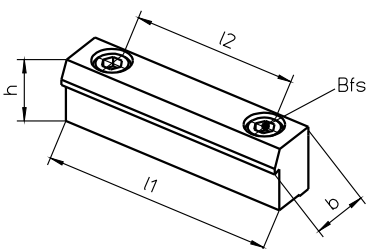
NS 8 / 9 / 12 -14



RM 2 / 4 / 6



BL 1..7



Linear drive	Page*	NS	ID No.	l [mm]	b [mm]	h [mm]	g
Beta 40	C and D	7	12649	16	5.9	1.5	M3
Beta 50-C	E	2	10557	16	10	4	M5
		RM2	15370	10	6	4	M4
Beta 60	C, D and E	8	14644	12	8	4.5	M5
		9	14652	12	8	4.5	M4
Beta 70-C	E	2	10557	16	10	4	M5
		RM2	15370	10	6	4	M4
Beta 80(-C)	E	3	10558	20	12	5	M6
		RM4	15371	13	8	6	M5
		4	10559	18	14	6	M8
Beta 100	E	4.1	16552	20	13	6	M8
		10	16499	20	13	6	M6
		RM4	15371	13	8	6	M5
	C and D	1	10556	12	10	4	M4
		2	10557	16	10	4	M5
		RM2	15370	10	6	4	M4
Beta 100-D Beta 140-C	E	4.1	16552	20	13	6	M8
		10	16499	20	13	6	M6
Beta 110(-C)	C and D	8	14644	12	8	4.5	M5
		9	14652	12	8	4.5	M4
		12	16280	12	8	4.5	M3
	E	4.1	16552	20	13	6	M8
		5	10560	20	14	8	M8
		10	16499	20	13	6	M6
Beta 120	E	RM6	15372	18	10	8	M6
		1	10556	12	10	4	M4
		2	10557	16	10	4	M5
	C and D	11	13510	12	10	3.5	M4
		RM2	15370	10	6	4	M4
		4.1	16552	20	13	6	M8
Beta 120-C	E	5	10560	20	14	8	M8
		10	16499	20	13	6	M6
		RM6	15372	18	10	8	M6
		1	10556	12	10	4	M4
Beta 140	E	2	10557	16	10	4	M5
		RM2	15370	10	6	4	M4
		14	18481	22	13.5	7.6	M8
Beta 140-C	C, D and E	13	18479	22	13.5	7.6	M4
		3	10558	20	12	5	M6
Beta 165(-C)	E	4.1	16552	20	13	6	M8
		10	16499	20	13	6	M6
		RM4	15371	13	8	6	M5
		1	10556	12	10	4	M4
Beta 180(-C)	E	RM2	15370	10	6	4	M4
		6	10561	25	18	8	M10
Beta 180(-C)	C and D	RM6	15372	18	10	8	M6
		6	10561	25	18	8	M10
		RM6	15372	18	10	8	M6
Beta 180(-C)	C and D	3	10558	20	12	5	M6
		RM2	15370	10	6	4	M4

Linear drive	BL	ID No.	l1 [mm]	l2 [mm]	b [mm]	h [mm]	Bfs
Beta 40	1	10552	70	50	15	17,5	M6
Beta 50-C	1	10552	70	50	15	17,5	M6
Beta 60	5	14489	70	50	15	13	M6
Beta 70	1	10552	70	50	15	17,5	M6
Beta 80(-C)	2	10553	70	50	15	20	M6
Beta 100	2	10553	70	50	15	20	M6
Beta 100-D	5	14489	70	50	15	13	M6
Beta 110(-C)	2	10553	70	50	15	20	M6
Beta 120	1	10552	70	50	15	17,5	M6
Beta 120-C	7	18430	70	50	16	25	M6
Beta 140	6	11551	70	50	15	20	M6
Beta 140-C	2	10553	70	50	15	20	M6
Beta 165(-C)	3	10554	80	60	25	30	M8
Beta 180(-C)	3	10554	80	60	25	30	M8

* For further information on page C – E, see catalogue page Z1

Bfs = Mounting screw DIN 912 / ISO 4762