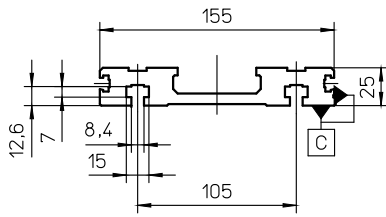
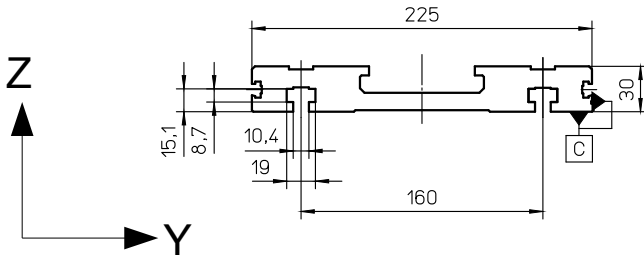


Profile Alpha-15-B-155



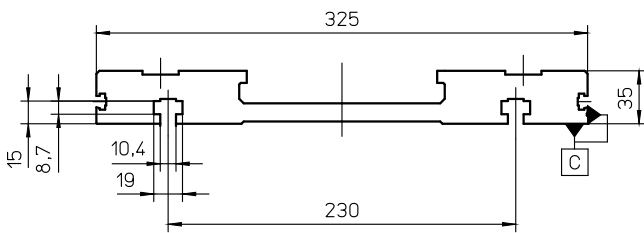
Specific mass [kg/m]	6.42
Surface measure [mm ²]	2377
Geometrical moment of inertia I _y [mm ⁴]	133830
Geometrical moment of inertia I _z [mm ⁴]	5816886
Section modulus W _y [mm ³]	9953
Section modulus W _z [mm ³]	74232

Profile Alpha-20-B-225



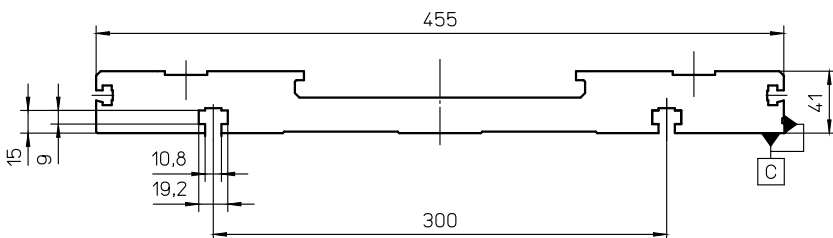
Specific mass [kg/m]	12.54
Surface measure [mm ²]	4644
Geometrical moment of inertia I _y [mm ⁴]	359736
Geometrical moment of inertia I _z [mm ⁴]	22821235
Section modulus W _y [mm ³]	22400
Section modulus W _z [mm ³]	201344

Profile Alpha-30-B-325



Specific mass [kg/m]	20.56
Surface measure [mm ²]	7615
Geometrical moment of inertia I _y [mm ⁴]	774301
Geometrical moment of inertia I _z [mm ⁴]	84507566
Section modulus W _y [mm ³]	40299
Section modulus W _z [mm ³]	517153

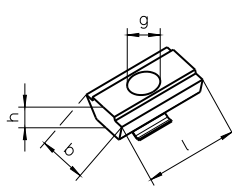
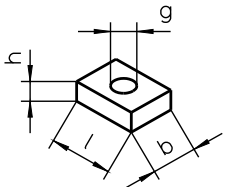
Profile Alpha-35-B-455



Specific mass [kg/m]	38.73
Surface measure [mm ²]	14346
Geometrical moment of inertia I _y [mm ⁴]	1810370
Geometrical moment of inertia I _z [mm ⁴]	284741450
Section modulus W _y [mm ³]	79280
Section modulus W _z [mm ³]	1243935

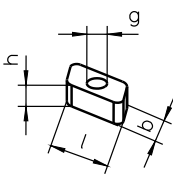
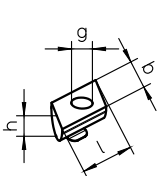
Stop angle standard page C

NS 3 / 4 / 6 / 11 NS 4.1 / 10



NS 24

RM 4 / 6



Linear unit	Page *	NS	ID No.	l [mm]	b [mm]	h [mm]	g
Alpha 15-B-155	E	4	10559	18	14	6	M8
		4.1	16552	20	13	6	M8
		10	16499	20	13	6	M6
		RM4	15371	13	8	6	M5
	C and D	11	13510	12	10	3,5	M4
Alpha 20-B-225	E	15	19211	25	18	8	M8
		RM6	15372	18	10	8	M6
	C and D	11	13510	12	10	3,5	M4
Alpha 30-B-325	E	6	10561	25	18	8	M10
		24	16772	25	17	9,5	M10
		RM6	15372	18	10	8	M6
	C and D	11	13510	12	10	3,5	M4
Alpha 35-B-455	E	6	10561	25	18	8	M10
		24	16772	25	17	9,5	M10
		RM6	15372	18	10	8	M6
	C and D	3	10558	20	12	5	M6

* For further information on page C – E, see catalogue page Z1