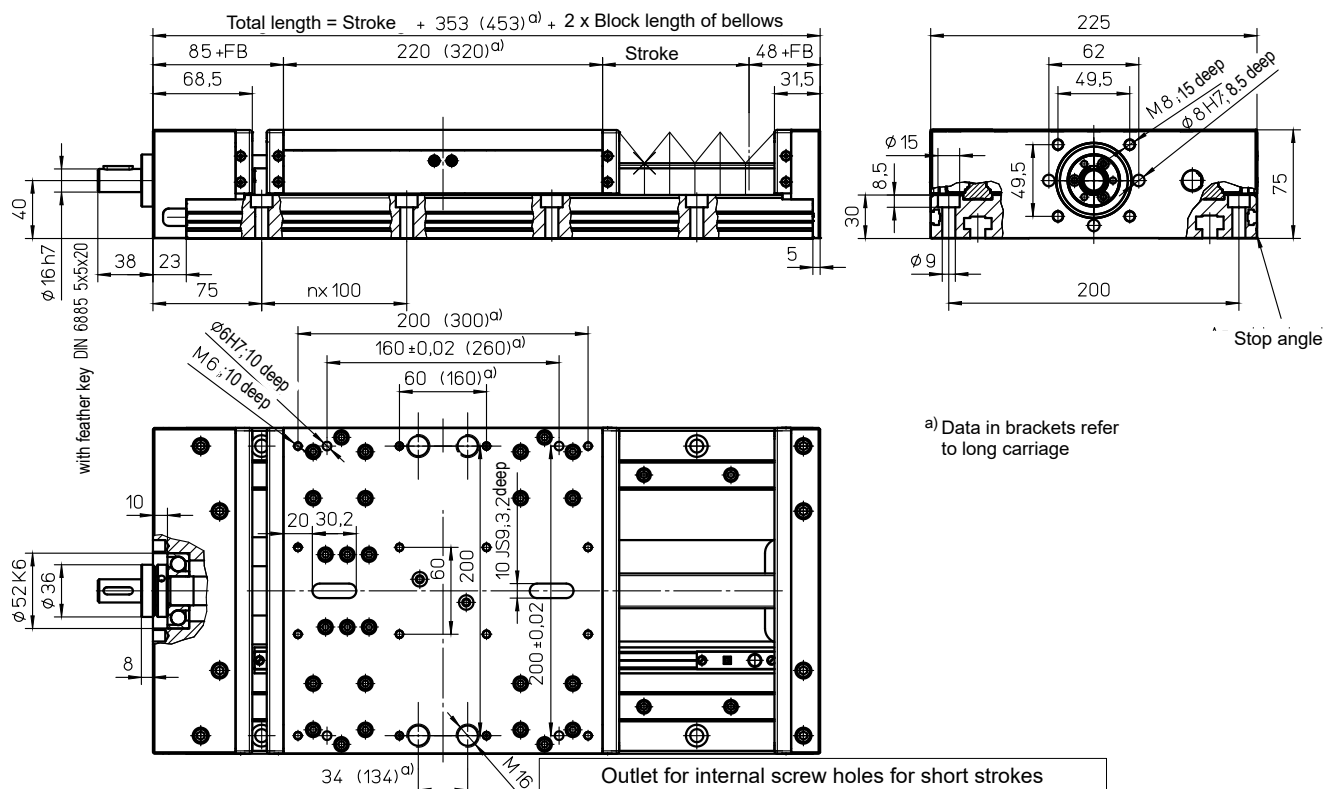


with ball screw (KGT) and double linear guide (SSS)



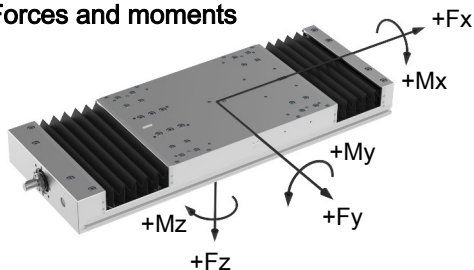
Weights

	SSS
Basic length without stroke:	17.60 kg
100 mm stroke:	2.70 kg
Entire carriage 220 mm:	6.20 kg
Entire carriage 320 mm:	9.00 kg
Max. total length:	2000 mm

Technical Data

	SSS
Max. total speed:	2.50 m/s
Max. acceleration:	20 m/s ²
Repeat accuracy:	± 0.03 mm (KGT)
Idle torque:	1.20 Nm

Forces and moments

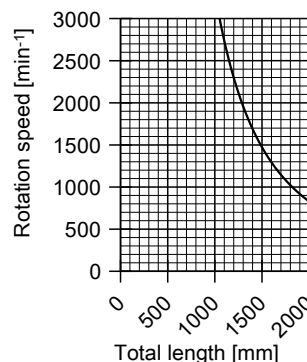


	SSS
Forces	Dynamic [N]
F_x	6000
F_y	5000
F_z	58000
-F_z	40000
Moments	Dynamic [Nm]
M_x	4000
M_y	3000 (4000)
M_z	1200 (1700)

Data in brackets refer to long carriage (320)

Drive element

	KGT
Max. rotation speed:	3000 min ⁻¹
Diameter:	25 mm
Pitch:	5 / 10 / 25 / 50 mm
Moment of inertia:	$2.25 \cdot 10^{-4}$ kgm ² /m



Calculation of block length of bellows (FB)

Stroke / 32 = Number of pleats
 Number of pleats • 3 – 2 = Block length of bellows (FB)

Example for stroke of 500 mm:

500 mm / 32 = 15.62 => 16 pleats (rounded up)
 16 • 3 – 2 = 46 mm simple block length (FB)