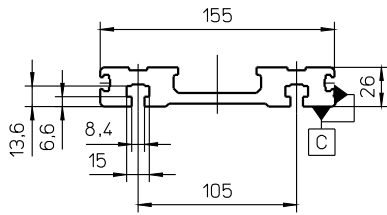
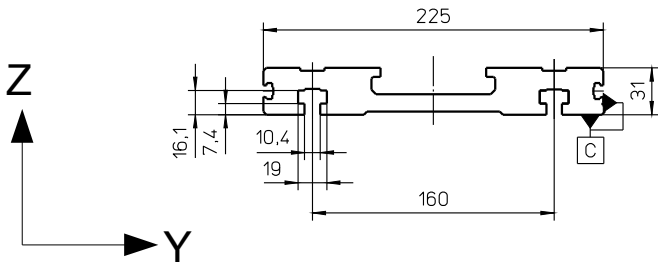


Profile Alpha-15-B-155



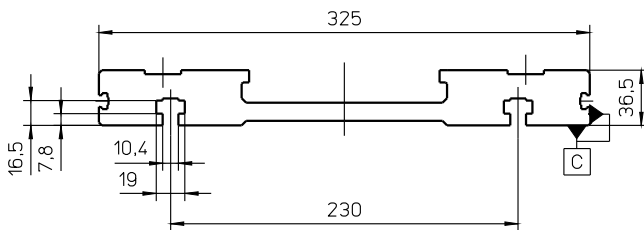
Specific mass [kg/m]	6.6
Surface measure [mm ²]	2446
Geometrical moment of inertia I _y [mm ⁴]	143666
Geometrical moment of inertia I _z [mm ⁴]	60433952
Section modulus W _y [mm ³]	10413
Section modulus W _z [mm ³]	77156

Profile Alpha-20-B-225



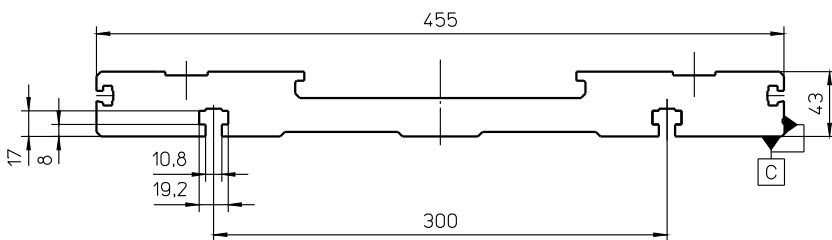
Specific mass [kg/m]	12.84
Surface measure [mm ²]	4756
Geometrical moment of inertia I _y [mm ⁴]	382465
Geometrical moment of inertia I _z [mm ⁴]	23549293
Section modulus W _y [mm ³]	23316
Section modulus W _z [mm ³]	207803

Profile Alpha-30-B-325



Specific mass [kg/m]	21.24
Surface measure [mm ²]	7868
Geometrical moment of inertia I _y [mm ⁴]	841240
Geometrical moment of inertia I _z [mm ⁴]	88022524
Section modulus W _y [mm ³]	42594
Section modulus W _z [mm ³]	538754

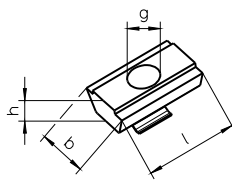
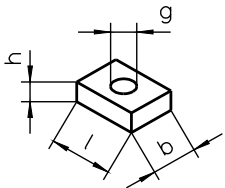
Profile Alpha-35-B-455



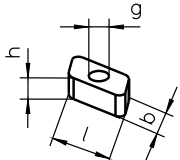
Specific mass [kg/m]	40.21
Surface measure [mm ²]	14892
Geometrical moment of inertia I _y [mm ⁴]	2003907
Geometrical moment of inertia I _z [mm ⁴]	297691553
Section modulus W _y [mm ³]	85106
Section modulus W _z [mm ³]	1300745

Stop angle standard page C

NS 3 / 4 / 6 / 11 NS 4.1 / 10



RM 4 / 6



Linear unit	Page *	NS	ID No.	l [mm]	b [mm]	h [mm]	g
Alpha 15-B-155	E	4	10559	18	14	6	M8
		4.1	16552	20	13	6	M8
		10	16499	20	13	6	M6
		RM4	15371	13	8	6	M5
	C and D	11	13510	12	10	3,5	M4
Alpha 20-B-225	E	15	19211	25	18	8	M8
		RM6	15372	18	10	8	M6
	C and D	11	13510	12	10	3,5	M4
Alpha 30-B-325	E	6	10561	25	18	8	M10
		RM6	15372	18	10	8	M6
	C and D	11	13510	12	10	3,5	M4
Alpha 35-B-455	E	6	10561	25	18	8	M10
		RM6	15372	18	10	8	M6
		3	10558	20	12	5	M6

* For further information on page C – E, see catalogue page Z1