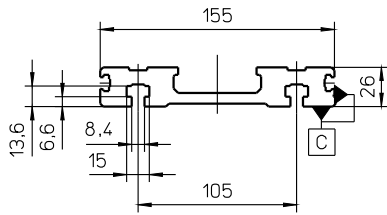
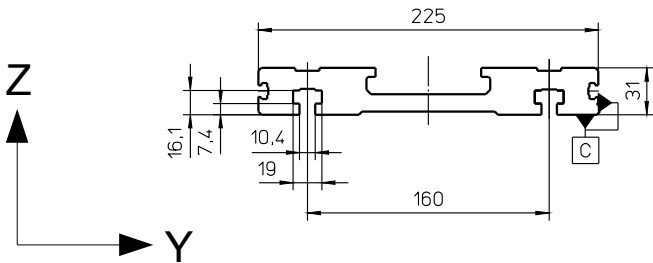


Profil Alpha-15-B-155



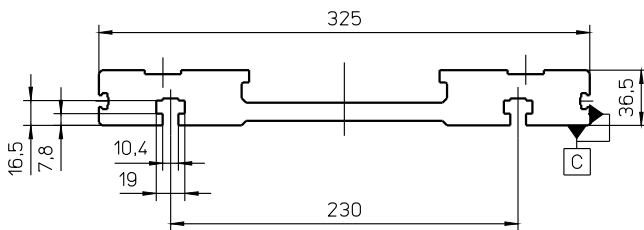
| | |
|--|----------|
| spezifische Masse [kg/m] | 6,6 |
| Flächenmaß [mm ²] | 2446 |
| Flächenträgheitsmoment I _y [mm ⁴] | 143666 |
| Flächenträgheitsmoment I _z [mm ⁴] | 60433952 |
| Widerstandsmoment W _y [mm ³] | 10413 |
| Widerstandsmoment W _z [mm ³] | 77156 |

Profil Alpha-20-B-225



| | |
|--|----------|
| spezifische Masse [kg/m] | 12,84 |
| Flächenmaß [mm ²] | 4756 |
| Flächenträgheitsmoment I _y [mm ⁴] | 382465 |
| Flächenträgheitsmoment I _z [mm ⁴] | 23549293 |
| Widerstandsmoment W _y [mm ³] | 23316 |
| Widerstandsmoment W _z [mm ³] | 207803 |

Profil Alpha-30-B-325



| | |
|--|----------|
| spezifische Masse [kg/m] | 21,24 |
| Flächenmaß [mm ²] | 7868 |
| Flächenträgheitsmoment I _y [mm ⁴] | 841240 |
| Flächenträgheitsmoment I _z [mm ⁴] | 88022524 |
| Widerstandsmoment W _y [mm ³] | 42594 |
| Widerstandsmoment W _z [mm ³] | 538754 |

Profil Alpha-35-B-455

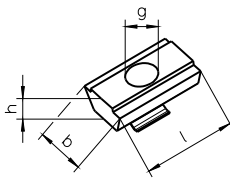
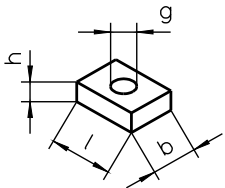


| | |
|--|-----------|
| spezifische Masse [kg/m] | 40,21 |
| Flächenmaß [mm ²] | 14892 |
| Flächenträgheitsmoment I _y [mm ⁴] | 2003907 |
| Flächenträgheitsmoment I _z [mm ⁴] | 297691553 |
| Widerstandsmoment W _y [mm ³] | 85106 |
| Widerstandsmoment W _z [mm ³] | 1300745 |

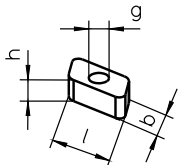
 Anschlagkante Standard Seite C

NS 3 / 4 / 6 / 11 / 15

NS 4.1 / 10



RM 4 / 6



| Lineareinheit | Seite * | NS | Ident.-Nr. | l [mm] | b [mm] | h [mm] | g |
|----------------|---------|-----|------------|--------|--------|--------|-----|
| Alpha 15-B-155 | E | 4 | 10559 | 18 | 14 | 6 | M8 |
| | | 4.1 | 16552 | 20 | 13 | 6 | M8 |
| | | 10 | 16499 | 20 | 13 | 6 | M6 |
| | | RM4 | 15371 | 13 | 8 | 6 | M5 |
| | C und D | 11 | 13510 | 12 | 10 | 3,5 | M4 |
| Alpha 20-B-225 | E | 15 | 19211 | 25 | 18 | 8 | M8 |
| | | RM6 | 15372 | 18 | 10 | 8 | M6 |
| | C und D | 11 | 13510 | 12 | 10 | 3,5 | M4 |
| Alpha 30-B-325 | E | 6 | 10561 | 25 | 18 | 8 | M10 |
| | | RM6 | 15372 | 18 | 10 | 8 | M6 |
| | C und D | 11 | 13510 | 12 | 10 | 3,5 | M4 |
| Alpha 35-B-455 | E | 6 | 10561 | 25 | 18 | 8 | M10 |
| | | RM6 | 15372 | 18 | 10 | 8 | M6 |
| | C und D | 3 | 10558 | 20 | 12 | 5 | M6 |

* Erläuterung der Seite C..E siehe Katalogseite Z1