

Übersicht Nutensteine (NS) Overview t-nuts (NS)

Abm. Size			Gew. Thread	Bez. Descript	Ident.-Nr. Ident-No.			
b [mm]	h [mm]	l [mm]	g []	[]	St [Nr./No.]	Werkst. / Mat. [Nr./No.]	VA [Nr./No.]	Werkst. / Mat. [Nr./No.]
5,9	1,5	16	M3	NS7	12649	1.0037 / blank	-	-
6	4	10	M4	RM2	-	-	15370	1.4301
8	4,5	12	M3	NS12	16280	1.0037 / verz.	-	-
8	4,5	12	M4	NS9	14652	1.0037 / verz.	14651	1.4301
8	4,5	12	M5	NS8	14644	1.0037 / verz.	14645	1.4301
8	6	13	M5	RM4	-	-	15371	1.4301
10	3,5	12	M4	NS11	13510	1.0037 / blank	18784	1.4301
10	4	12	M4	NS1	10556	1.0037 / verz.	12636	1.4301
10	4	16	M5	NS2	10557	1.0037 / verz.	12441	1.4301
10	5	20	M6	NS2.1	22955	1.0037 / verz.	-	-
10	8	18	M6	RM6	-	-	15372	1.4301
12	5	20	M6	NS3	10558	1.0037 / verz.	12639	1.4301
13	6	20	M6	NS10	16499	1.0037 / verz.	16340	1.4301
13	6	20	M8	NS4.1	16552	1.0037 / verz.	-	-
13,5	7,6	22	M4	NS13	18479	1.0037 / verz.	18480	1.4301
13,5	7,6	22	M8	NS14	18481	1.0037 / verz.	18482	1.4301
14	6	18	M8	NS4	10559	1.0037 / verz.	19649	1.4301
14	8	20	M8	NS5	10560	1.0037 / verz.	12642	1.4301
16	8	20	M5	NS18	23951	1.0037 / verz.	-	-
16	8	20	M6	NS19	23950	1.0037 / verz.	-	-
16	8	20	M8	NS20	23949	1.0037 / verz.	-	-
18	8	25	M8	NS15	19211	1.0037 / verz.	-	-
18	8	25	M10	NS6	10561	1.0037 / verz.	12645	1.4301
20	10	30	M12	NS17	19722	1.0503 / verz.	20985	1.4301

Beschaffung nach Auftrag, Lieferzeit ca. 8 Wochen
Procurement after order, delivery time approx. 8 weeks

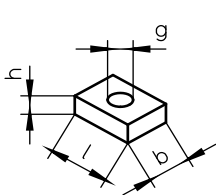
Werkstoffe / Materials:

1.0037 => St37K
1.0503 => C45K
1.4301 => V2A

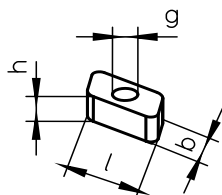
Oberfläche / Surface:

verz. = zinc plated
blank = bright

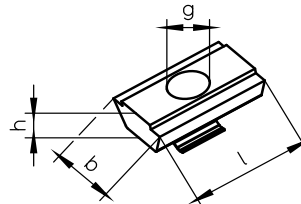
Ausführungen / Model:



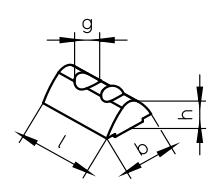
NS 1..7
NS 2.1
NS 11



RM 2
RM 4
RM 6



NS 4.1
NS 10



NS 8
NS 9
NS 12..14